

ATTACHMENTS TO MINUTES

November 4, 2011

Attachment

A. Academic Affairs Committee32-56

B. Building Committee57-67

C. Audit and Finance Committee68-70

D. Northwestern Oklahoma State University71-73

E. Northeastern State University74-79

F. University of Central Oklahoma80-89

G. East Central University90-95

H. Southeastern Oklahoma State University96-100

I. Southwestern Oklahoma State University101-105

TO: Board of Regents of the
Regional University System of Oklahoma
Connie Reilly, Chair

FROM: Randy L. Beutler, President

DATE: October 19, 2011

SUBJECT: Academic Affairs Committee Agenda Items - *November 4, 2011*

Please place Southwestern Oklahoma State University on the Academic Affairs Committee agenda for the November 4, 2011, Board of Regents of the Regional University System of Oklahoma meeting regarding the following items:

- A Program Modification Request for other degree program modifications for the Bachelor of Science in Industrial Technology program (see attached information).
- A Program Modification Request for a program requirement change for the Master of Science in School Psychology program (see attached information).

If you need additional information regarding these items, please let me know.

csf

Attachments

Request for Program Modification

Oklahoma State Regents for Higher Education

Institution submitting request: Southwestern Oklahoma State University

Contact person: Dr. Blake Sonobe

Title: Provost

Phone number: 580-774-3771

Current title of degree program (Level II): Bachelor of Science

Current title of degree program (Level III): Industrial Technology

State Regent's three-digit program code: 026

Degree Granting Academic Unit: Department of Engineering Technology

With options in: A. _____

B. _____

C. _____

D. _____

E. _____

TYPE OF REQUEST: Check those appropriate and complete appropriate pages ***ONLY!***

(1) Program Deletion

(2) Program Suspension

(3) Change of Program Name
and/or Degree Designation

(4) Option Addition

(5) Option Deletion

(6) Option Name Change

(7) Program Requirement Change

(8) Other Degree Program Modification

***Complete and return ONLY
this cover sheet AND the
appropriate page specifying
the requested modification!***

Signature of President: _____ Date: _____

Date of Governing Board Approval: _____

**(8) Other Degree
Program Modification**

Oklahoma State Regents for Higher Education
REQUEST FOR PROGRAM MODIFICATION
(continued)

Institution submitting request: Southwestern Oklahoma State University

State Regents' three-digit program code and Program name of program to be modified:

098 Industrial Technology

(8) OTHER DEGREE PROGRAM MODIFICATION

Requested action: The department requests that the following areas of specialization within the Industrial Technology program be suspended and removed from the undergraduate catalog: Environmental Technology, Industrial Supervision, and General Technology

Reason for requested action (attach no more than one page if space provided is inadequate):
Department faculty have reviewed enrollment trends, advisory committee input, and accreditation board opinion, and believe it is in the best interest of the overall program to suspend these areas of specialization and focus on growing the remaining two specializations in Electronics Technology, and Manufacturing Technology.

Will requested change require additional funds? No Yes

If yes, please specify the amount of the additional costs, the source of the funds, and how they will be expended (if explanation exceeds space provided, attach no more than one page).

Will requested action change curriculum? No Yes

If yes, attach current and proposed curriculum degree program requirements and degree program objectives (on no more than three pages). Indicate the changes clearly.

(CURRENT)
**BACHELOR OF SCIENCE
 INDUSTRIAL TECHNOLOGY**

GENERAL EDUCATION

Courses that are required are in bold type.
 Courses that are *recommended* are in italics.

TOTAL HOURS..... 43 - 44

Composition.....6

- ENGL 1113 English Composition I
- ENGL 1213 English Composition II

Mathematics.....3

- MATH 1143 Math Concepts
- MATH 1513 College Algebra OR
higher numbered math course

Computer Applications.....2

- COMSC 1022 Computers & Information Access

Natural Sciences8

- BIOL 1004 Biological Concepts
- SCI 1514 Concepts of Physical Science
- ASTRO 1904 Astronomy
- GEOL 1934 Physical Geology
- CHEM 1004 General Chemistry OR
higher numbered chemistry course

Humanities & Fine Arts.....6

- ART 1223 Art Survey
- LIT 2413 Intro to Literature
- MUSIC 1013 Intro to Music I
- PHILO 1453 Intro to Philosophy
- COMM 1313 Intro to Public Speaking

U.S. History & Government6

- POLSC 1103 American Government & Politics
- HIST 1063 U.S. History

Economic & International Studies6

- HIST 1033 World History
- GEOG 1103 World Cultural Geography
- ECONO 2263 Intro to Macroeconomics *OR*
- ECONO 2363 Intro to Microeconomics

Behavioral, Social Science, & Cultural Studies..... 6-7

- PSYCH 1003 General Psychology
- SOCIO 1003 Introduction to Sociology
- 4 World Languages
- TECH 1223 Technology & Society
- KINES 1133 Wellness Concepts & Exercise Appl

**Industrial Technology Major/Minor
 Code No. 135**

The Industrial Technology major/minor includes a 40-hour core requirement, 12 hours of management, 24 hours from a selected technology, and a balance of 3000/4000 electives approved by the department to total 120 hours.

Core Requirements 41

- CHEM 1004 General Chemistry
- MATH 1613 College Trigonometry
- OR MATH 3413 Statistical Methods
- OR MATH 3433 Statistics
- MFET 4020 Professional Certification Requirements
- TECH 1101 Introduction to Technology
- TECH 1203 Engineering Drafting
- TECH 1313 Wood Materials & Processes
- TECH 1713 Applied Electronics
- TECH 2513 Fabrication Processes I
- TECH 3113 Industrial Safety
- TECH 3143 Technical Presentations
- TECH 3203 Computer Aided Drafting I (CAD)
- TECH 3453 Industrial Plastics
- TECH 3463 Manufacturing Operations I
- TECH 3613 Power Systems
- TECH 4123 Industrial Supervision

Management electives (by advisement) 12

- ACCTG 2213 Principles of Financial Accounting
- ACCTG 2313 Principles of Managerial Accounting
- COMSC 1433 Visual Basic Programming
- ECONO 2263 Introduction to Macroeconomics
- ECONO 2363 Introduction to Microeconomics
- GEBUS 3123 Legal Environment of Business
- MATH 3413 Statistical Methods
- OR MATH 3433 Statistics I
- MNGMT 3233 Management
- MNGMT 3333 Personnel/Human Resource Mngmt.
- MRKTG 3143 Principles of Marketing
- TECH 3173 Environmental Regulations
- TECH 4433 Quality Control
- TECH 4443 Material Handling and Facility Plng.
- TECH 4493 Manufacturing Operations II
- TECH 4900 Orientation to Industrial Internship
- TECH 4916 Industrial Internship

Majors must select one specialization from the following technology areas.

Electronics Technology..... 24

Required Courses..... 18

- TECH 1813 Electronic Circuit Analysis
- TECH 2813 Adv. Electronic Circuit Analysis
- TECH 3823 Industrial Electronics
- TECH 4823 Digital Electronics
- TECH 4833 Microcomputer Electronics
- TECH 4843 Programmable Controllers

Approved Electives..... 6

(CONTINUED ON NEXT PAGE)

July 2007

Environmental Technology.....24
 Required Courses21
 BIOL 2204 Introductory Zoology
 CHEM 1203 General Chemistry I
 CHEM 1252 General Chemistry I (Lab)
 CHEM 1303 General Chemistry II
 CHEM 1352 General Chemistry II (Lab)
 GEOL 1934 Physical Geology
 TECH 3173 Environmental Regulations
 Approved Electives.....3

Industrial Supervision.....24
 Required Courses15
 MNGMT 3433 Organizational Theory
 TECH 3173 Environmental Regulations
 TECH 3413 Manufacturing Processes
 TECH 4433 Quality Control
 TECH 4493 Manufacturing Operations II
 Approved Electives9
 (Certification from the American Production and Inventory Control Society (APICS) Recommended)

Manufacturing Technology.....24
 Required Courses20
 TECH 3263 Machine Drafting I
 TECH 3413 Manufacturing Processes
 TECH 3513 Materials Testing & Analysis
 TECH 3523 Fabrication Processes II
 TECH 4454 Computer Aided Manuf (CAM)
 TECH 4514 Machine Tool Processes
 Approved Electives4

General Technology.....24
 Approved Electives24

2000-12 Extra institutional Learning Credit may be awarded for current professional licenses and certificates that have been evaluated and approved for credit by the Technology Department. Educational credit recommended by the American Council on Education (ACE), ACE/PONSI, and/or completion of a special skills examination may also be evaluated for credit.
 (1-12 credits lower division maximum 12)

4000-12 Extra institutional Learning credit may be awarded for current professional licenses and certificates that have been evaluated and approved for credit by the Technology Department. Educational credit recommended by the American Council on Education (ACE), ACE/PONSI, and/or completion of a special skills examination may also be evaluated for credit.
 (1-12 credits upper division maximum 12)

Electives (by advisement) to total..... 120

Industrial Technology articulates industrial management with a specialization in electronics technology, environmental technology, industrial supervision, manufacturing technology, and general technology. Technical concepts and experiences are supported with courses in applied mathematics, science, and management. A supervised industrial internship completes the program. Specific curricular emphases include:

1. The analysis of industrial materials.
2. The identification of production processes.
3. An examination of the concepts of industrial management and human relations.
4. The solving of technical problems found in industry.
5. The development of skills relating to a specific area of specialization.

The mission of the Industrial Technology Program is to provide students the education and experience necessary to successfully perform the functions of an industrial manager.

* SDE Guidelines and Procedures Handbook for Certification, page 3, and OK Regents for Higher Education Rule 11-2-24 state that courses classified as professional teacher education must be acquired from a four-year accredited program.

REGULATIONS PERTAINING TO GRADUATION

Minimum credit hours for graduation	120
Minimum credit hours in the liberal arts & sciences	55
Minimum credit hours in upper-division (3000/4000 courses).....	40
Minimum credit hours (3000/4000 courses) in major completed at SWOSU	8
Minimum credit hours at SWOSU (15 of the last 30).....	30
Minimum Grade Point Average in all coursework	2.00
Minimum Grade Point Average in major	2.00

(REVISED)
**BACHELOR OF SCIENCE
INDUSTRIAL TECHNOLOGY**

GENERAL EDUCATION

Courses that are required are in bold type.
Courses that are *recommended* are in italics.

TOTAL HOURS43 - 44

Composition.....6

- ENGL 1113** English Composition I
- ENGL 1213** English Composition II

Mathematics.....3

- MATH 1143** Math Concepts
- MATH 1513** College Algebra **OR**
higher numbered math course

Computer Applications.....2

- COMSC 1022** Computers & Information Access

Natural Sciences.....8

- BIOL 1004** Biological Concepts
- SCI 1514** Concepts of Physical Science
- ASTRO 1904** Astronomy
- GEOL 1934** Physical Geology
- CHEM 1004** General Chemistry **OR**
higher numbered chemistry course

Humanities & Fine Arts.....6

- ART 1223** Art Survey
- LIT 2413** Intro to Literature
- MUSIC 1013** Intro to Music I
- PHILO 1453** Intro to Philosophy
- COMM 1313* Intro to Public Speaking

U.S. History & Government.....6

- POLSC 1103** American Government & Politics
- HIST 1063** U.S. History

Economic & International Studies.....6

- HIST 1033** World History
- GEOG 1103** World Cultural Geography
- ECONO 2263* Intro to Macroeconomics **OR**
- ECONO 2363* Intro to Microeconomics

Behavioral, Social Science, & Cultural Studies.....6-7

- PSYCH 1003** General Psychology
- SOCIO 1003** Introduction to Sociology
- 4** World Languages
- TECH 1223** Technology & Society
- KINES 1133** Wellness Concepts & Exercise Appl

**Industrial Technology Major/Minor
Code No. 135**

The Industrial Technology major/minor includes a 40-hour core requirement, 12 hours of management, 24 hours from a selected technology, and a balance of 3000/4000 electives approved by the department to total 120 hours.

Core Requirements41

- CHEM 1004** General Chemistry
- MATH 1613** College Trigonometry
OR **MATH 3413** Statistical Methods
OR **MATH 3433** Statistics
- MFET 4020** Professional Certification Requirements
- TECH 1101** Introduction to Technology
- TECH 1203** Engineering Drafting
- TECH 1313** Wood Materials & Processes
- TECH 1713** Applied Electronics
- TECH 2513** Fabrication Processes I
- TECH 3113** Industrial Safety
- TECH 3143** Technical Presentations
- TECH 3203** Computer Aided Drafting I (CAD)
- TECH 3453** Industrial Plastics
- TECH 3463** Manufacturing Operations I
- TECH 3613** Power Systems
- TECH 4123** Industrial Supervision

Management electives (by advisement) 12

- ACCTG 2213** Principles of Financial Accounting
- ACCTG 2313** Principles of Managerial Accounting
- COMSC 1433** Visual Basic Programming
- ECONO 2263** Introduction to Macroeconomics
- ECONO 2363** Introduction to Microeconomics
- GEBUS 3123** Legal Environment of Business
- MATH 3413** Statistical Methods
OR **MATH 3433** Statistics I
- MNGMT 3233** Management
- MNGMT 3333** Personnel/Human Resource Mngmt.
- MRKTG 3143** Principles of Marketing
- TECH 3173** Environmental Regulations
- TECH 4433** Quality Control
- TECH 4443** Material Handling and Facility Plng.
- TECH 4493** Manufacturing Operations II
- TECH 4900** Orientation to Industrial Internship
- TECH 4916** Industrial Internship

Majors must select one specialization from the following technology areas.

Electronics Technology..... 24

Required Courses..... 18

- TECH 1813** Electronic Circuit Analysis
- TECH 2813** Adv. Electronic Circuit Analysis
- TECH 3823** Industrial Electronics
- TECH 4823** Digital Electronics
- TECH 4833** Microcomputer Electronics
- TECH 4843** Programmable Controllers

Approved Electives..... 6

Manufacturing Technology..... 24

Required Courses..... 20

- TECH 3263** Machine Drafting I
- TECH 3413** Manufacturing Processes
- TECH 3513** Materials Testing & Analysis
- TECH 3523** Fabrication Processes II
- TECH 4454** Computer Aided Manufacturing (CAM)
- TECH 4514** Machine Tool Processes

Approved Electives 4

2000-12 Extra institutional Learning Credit may be awarded for current professional licenses and certificates that have been evaluated and approved for credit by the Technology Department. Educational credit recommended by the American Council on Education (ACE), ACE/PONSI, and/or completion of a special skills examination may also be evaluated for credit.
(1-12 credits lower division maximum 12)

4000-12 Extra institutional Learning credit may be awarded for current professional licenses and certificates that have been evaluated and approved for credit by the Technology Department. Educational credit recommended by the American Council on Education (ACE), ACE/PONSI, and/or completion of a special skills examination may also be evaluated for credit.
(1-12 credits upper division maximum 12)

Electives (by advisement) to total 120

Industrial Technology articulates industrial management with a specialization in electronics technology, and manufacturing technology. Technical concepts and experiences are supported with courses in applied mathematics, science, and management. A supervised industrial internship completes the program. Specific curricular emphases include:

1. The analysis of industrial materials.
2. The identification of production processes.
3. An examination of the concepts of industrial management and human relations.
4. The solving of technical problems found in industry.
5. The development of skills relating to a specific area of specialization.

The mission of the Industrial Technology Program is to provide students the education and experience necessary to successfully perform the functions of an industrial manager.

* SDE Guidelines and Procedures Handbook for Certification, page 3, and OK Regents for Higher Education Rule 11-2-24 state that courses classified as professional teacher education must be acquired from a four-year accredited program.

REGULATIONS PERTAINING TO GRADUATION

Minimum credit hours for graduation	120
Minimum credit hours in the liberal arts & sciences	55
Minimum credit hours in upper-division (3000/4000 courses).....	40
Minimum credit hours (3000/4000 courses) in major completed at SWOSU	8
Minimum credit hours at SWOSU (15 of the last 30)	30
Minimum Grade Point Average in all coursework.....	2.00
Minimum Grade Point Average in major	2.00

Request for Program Modification

Oklahoma State Regents for Higher Education

Institution submitting request: Southwestern Oklahoma State University

Contact person: Dr. Blake Sonohe

Title: Provost

Phone number: 580-774-3771

Current title of degree program (Level II): Master of Science in School Psychology

Current title of degree program (Level III): _____

State Regent's three-digit program code: 148

Degree Granting Academic Unit: Psychology

- With options in: A. _____
 B. _____
 C. _____
 D. _____
 E. _____

TYPE OF REQUEST: Check those appropriate and complete appropriate pages ***ONLY!***

- (1) Program Deletion
- (2) Program Suspension
- (3) Change of Program Name
and/or Degree Designation
- (4) Option Addition
- (5) Option Deletion
- (6) Option Name Change
- (7) Program Requirement Change
- (8) Other Degree Program Modification

***Complete and return ONLY
this cover sheet AND the
appropriate page specifying
the requested modification!***

Signature of President: _____ **Date:** _____

Date of Governing Board Approval: _____

(7) Program Requirement Change

2011

Attachment A
Page 9 of 25
Rev July 2007

Oklahoma State Regents for Higher Education
REQUEST FOR PROGRAM MODIFICATION
(continued)

Institution submitting request: Southwestern Oklahoma State University
State Regents' three-digit program code and Program name of program to be modified:
148 M.S. School Psychology

(7) PROGRAM REQUIREMENT CHANGES

- Course requirement change (change in number of core courses, electives, general education, etc. Changes in course prefixes that do not effect content should be reported, but do not require approval.)
- Degree program requirement change (i.e. prerequisites, minimum GPA for admission or other admission criteria changes, graduation criteria change, etc.)
- Total credit hours for the degree will *NOT* change.
- Total credit hours for the degree will change from 33 to 31.

Summary of changes (attach no more than one page if space provided is inadequate):

Please see attached sheet.

Will total number of credit hours required for the degree change No Yes

Explain: The program is changing from a 33 hour M.S. degree program to a 31 hour program.

Attach current and proposed degree program requirements and degree program objectives (on no more than three pages). Indicate the changes clearly.

Will requested change require additional funds? No Yes

If yes please specify the number of the additional costs the source of the funds and how they will be expended (attach no more than one page if space provided is inadequate).

We were able to cover this program previously with our current compliment of faculty. I project that the only additional costs will be hiring adjunct faculty for two or three of the courses once the program begins to grow. The additional costs should be under \$7000 which should be more than offset by the increase in tuition generated by additional graduate students enrolled in program.

Reason for requested action (attach no more than one page if space provided is inadequate):

The additional prerequisite permits us to eliminate COUN5593 Advanced Tests and Measurement which covered that content. Two of the courses deleted COUN 5513 Intro to Counseling & Guidance and PSYCH 5413 Personality Theories/Research do not fit the standards for the program as well as the two classes added, PYYCH 5113 Intro to School Psychology and PSYCH 5143 Research Methods. The two classes moved from the MS to the EdS Program make more sense at this second tier level. The two practicum classes (EDPSY 5782 and PSYCH 5902) were seen as essential for qualifying for a MS degree program in School Psychology. The change in the number of hours (33 to 31 hours) is of little importance since it is the combination of this program and the EdS proposed program that must total at least 60 hours for students to qualify for specialist certification. The course and especially their content, fit the state and national standards for a Specialist level School Psychology Program and Training. The sequence of the courses also makes more sense. Furthermore, the changes we are propping are in part driven by the feedback we received from the State Commission on Teacher Preparation on what we needed to have our program meet state certification standards.

Summary of Changes

Pre-requisite changes

- Add: PSYCH 2433 Psychological Statistics
- Add: PSYCH 3253 Psychological Testing

Program Changes

- Delete: COUN 5593 Advanced Test and Measurements
- Delete: COUN 5513 Introduction to Counseling and Guidance
- Delete: PSYCH 5413 Personality Theories
- Delete: PSYCH 5133 Crisis Intervention Techniques
- Delete: PSYCH 5633 Advanced Abnormal Psychology

- Add: COUN 5113 Introduction to School Psychology
- Add: COUN 5543 Theories and Techniques of Counseling
- Add: EDPSY 5782 Practicum in School Psychometry
- Add: PSYCH 5902 Practicum in School Psychology
- Add: PSYCH 5143 Research Methods

The program requirements will change from 33 hours to 31 hours.

M.S. School Psychology Program Objectives and Requirements

(Modifications are in red ink)

PROGRAM OBJECTIVES

The graduate program in School Psychology at Southwestern Oklahoma State University is a two tier program. There Master of Science program in School Psychology is a 31 hour program. Students would then enter the 31 hour Ed.S. (Education Specialist) Program in School Psychology (new program request will be submitted) for a combination of 62 hours. The combined programs will provide students with the knowledge and skills necessary to serve as an effective School Psychologist Specialist. It is designed for students who have acquired a Bachelor's degree from an accredited college or university. The knowledge and skills that are emphasized in the program include but are not limited to the following

1. Knowledge in the following areas

- a. data based decision making models and methods for assessment to be used in evaluating and making decisions about students
- b. learning and cognitive theories and their application to instruction targeted to a variety of students with different abilities and needs
- c. human development and differences in development as well as methods to assess development
- d. the influences on human learning and development
- e. mental health issue and crisis intervention information and techniques with an emphasis on prevention
- f. school systems organization, policies and services and how to effect them
- g. family systems
- h. consultation and collaboration models and methods and using these in planning and decisions making at the individual and group level
- i. research methods evaluative methods and how to apply these methods
- j. history of school psychology and the models, policies and standards of the profession
- k. understanding and responding to human diversity
- l. information sources and technology relevant to the field

2. Skills in the following areas

- a. administering a variety of assessment instruments and evaluate the results
- b. using data to design and implement intervention strategies
- c. effectively communicating and collaborating with the students, families, administrators and other services
- d. shaping and implement school and related policies
- e. diagnosing psychopathology and using therapy and counseling techniques for both individuals and groups

Admission Requirements for M.S. in School Psychology Program

The deadlines for application for the M.S. program in School Psychology are June 1, for the Fall Semester and November 1, for the Spring Semester. Application will not be accepted for summer admission. In addition to the University and graduate studies admission requirements, applicants for graduate programs in Psychology must meet the following conditions:

1. The prerequisites for the program are: A Bachelor's Degree in Psychology or completion of the following courses or their equivalents: 1003 General Psychology, 2433 Psychological Statistics and 3253 Psychological Tests.
2. An undergraduate GPA of 2.5 or above **OR** a satisfactory minimum score with respect the combination of GPA and GRE scores:

$$\text{GPA} \times 150 + \text{GRE}^1 = 1100$$

The GRE is waived for students who have an undergraduate grade point average equal to or greater than 2.75 and maintain a minimum of a 3.50 grade point average during the first nine (9) hours of graduate course work.

3. Applicants must submit two professional recommendations completed by individuals who are in a position to rate academic aptitude, motivational and character factors (forms are available in the Graduate Office or on our web site). Forms should be sent directly from the reference to the Graduate Office.
4. Applicants must also submit an original OSBI Background Check. The procedure for completing the check is in the application packet.
5. Acceptance into any of the Psychology Master programs will require completing an interview with at least two Psychology Faculty. The interviews will be scheduled for the afternoons of the second Friday of June for fall applicants and the second Friday of November for spring applicants.
6. Upon acceptance into any of these graduate programs, the candidate must successfully complete a Plan of Study with his/her advisor.
7. Candidates must complete Entry Level Portfolios for Admission and Culminating Portfolios the final semester of graduate school. (Specific guidelines are available on the Psychology Department web site.)
8. Approval to enroll in the practicum/internship courses for certification is an additional step that requires a majority vote by the Certification/Licensing Committee for the Psychology Department.

Retention and Graduation Standards

Students must complete all classes including the Capstone Class and Practicum with a minimum of a 3.00 GPA to graduate.

¹The GRE score will be a sum of the scores on the verbal test and the quantitative test.

Degree Requirements

Course Work:

The M.S. School Psychology Program requires 31 hours of coursework beyond the baccalaureate. A maximum of nine applicable semester hours of graduate credit from accredited colleges and universities may apply toward requirements of a graduate degree at Southwestern Oklahoma State University (SWOSU). Only coursework with grades of A and B is eligible for transfer. All applicable graduate credit earned at SWOSU prior to admission into a degree program is considered as transfer credit.

** Grades: According to the graduate school requirements, students in the program must maintain a GPA of 3.0 and have no more than six hours of C to maintain good standing in the program.

M.S. School Psychology
(Current)

I. Required Professional Education and Psychology Core (15 hours)

~~COUN 5513 Introduction to Counseling and Guidance~~

COUN 5893 Ethical, Legal/Professional Standards

~~COUN 5593 Advanced Tests & Measurement~~

EDPSY 5723 Advanced Psychology of Learning

EDPSY 5743 Life Span Development

II. Required School Psychology Specialization Core (18 hours)

~~PSYCH 5413 Personality Theories/Research~~

~~PSYCH 5633 Advanced Abnormal Psychology~~

~~PSYCH 5133 Crisis Intervention~~

PSYCH 5223 Techniques of Psychotherapy

EDPSY 5613 Binet/Woodcock Johnson

EDPSY 5713 Wechsler Intelligence Scale

III. Capstone Experience

EDUC 5950 Graduate Capstone Experience (must be completed during final semester)

M.S. School Psychology Program
(Proposed)

PSYCH 5113 Introduction to School Psychology

COUN 5893 Ethical, Legal/Professional Standards

EDPSY 5723 Advanced Psychology of Learning

EDPSY 5743 Life Span Development

PSYCH 5143 Research Methods

COUN 5543 Theories and Techniques of Counseling (**modified name**)

PSYCH 5223 Techniques of Psychotherapy

EDPSY 5613 Binet/Woodcock Johnson

EDPSY 5713 Wechsler Intelligence Scale

EDPSY 5782 Practicum in School Psychometry

PSYCH 5902 Practicum in School Psychology (must be completed during final semester)

EDUC 5950 Graduate Capstone Experience (must be completed during final semester)



OFFICE OF THE PRESIDENT

SOUTHEASTERN OKLAHOMA STATE UNIVERSITY
1405 N. FOURTH AVE., PMB 4236
DURANT, OK 74701-0609

580-745-2500
FAX 580-745-2515
WWW.SE.EDU

October 19, 2011

Regional University System of Oklahoma
Landmark Towers
3555 Northwest 58th, Suite 320
Oklahoma City, OK 73112

RE: November 2011 Academic Affairs Committee

Dear Board Members:

Enclosed is the Post Audit-Degree Program Review and related documents as requested by the State Regents for the Bachelor of Science in Biotechnology (104). The following recommendation is provided:

- Program Deletion – Bachelor of Science in Biotechnology with a “teach out” period of four years (until May 2015) that will allow currently enrolled majors to complete their degrees.

Please let me know if I may be of further assistance.

Sincerely,

A handwritten signature in cursive script that reads "Larry Minks".

Dr. Larry Minks
President

Enclosures



OKLAHOMA STATE REGENTS FOR HIGHER EDUCATION

Improving our future by degrees

June 1, 2011

Dr. Doug McMillan
Interim Vice President for Academic Affairs
Southeastern Oklahoma State University
1405 North Fourth Avenue, PMB 4137
Durant, Oklahoma 74701-0609

Dear Dr. McMillan:

Re: Degree Program Review

As you know, State Regents' policy provides for provisional approval of new programs with final approval dependent upon meeting institutionally established and State Regents' approved criteria. One Southeastern Oklahoma State University (SEOSU) program is scheduled for review in Fall 2011 as described below:

Bachelor of Science in Biotechnology (104)

This program received provisional approval at the May 24, 2002 meeting with continuation of the program beyond Fall 2007 dependent on the program enrolling 30 majors in Fall 2006 and producing 10 graduates in 2006-07. The program did not meet the criteria (enrolled 22; graduated 1) and at the November 29, 2007 meeting, the State Regents approved an extension of the program review schedule with continuation beyond Fall 2009 dependent on the program achieving the revised criteria of 25 majors enrolled in Fall 2008 and 5 graduates in 2008-2009. The program again did not meet both criteria (enrolled 17; graduated 7), and at the February 11, 2010 meeting, the State Regents approved another review schedule extension with continuation of the program beyond Fall 2011 dependent on meeting the following revised criteria:

- Enroll 25 students in Fall 2010; and
- Graduate 10 in 2010-11.

In preparation for this evaluation, we request SEOSU provide a review of the program to the State Regents' office by **September 15, 2011**, so the State Regents may take action regarding final endorsement of the program. A Post Audit Report/Review for Final Approval Form in both Word and PDF format is available at <http://www.okhighered.org/admin-fac/academic-forms/> on the State Regents' website, if needed.

Thank you for your time and consideration. If you have questions or concerns, please contact Ms. Stéphanie Beauchamp at sbeauchamp@osrhe.edu or (405) 225-9399.

Sincerely,

Houston D. Davis, Ph.D.
Vice Chancellor for Academic Affairs

HDD/egw

Post Audit Report Form - Review for Final Approval

Oklahoma State Regents for Higher Education

SOUTHEASTERN OKLAHOMA STATE UNIVERSITY
(Institution submitting request)

BACHELOR OF SCIENCE IN BIOTECHNOLOGY (104)
(Program name and State Regents' program code)

Date Program was approved by the State Regents: May 24, 2002

Provide a brief status report summarizing the new program's progress (*limit response to three pages*).

Provide the following information:

Approved Productivity Criteria:		Required	Achieved
1.	Minimum number of majors enrolled (<i>example: 18 student enrolled in Fall '04; found in the letter from the OSRHE</i>)	25	15 Fall10
2.	Minimum number of graduates (<i>example: 8 graduates in 04-05; found in the letter from the OSRHE</i>)	10	1 Fall10/Spr11

All required criteria were met by the program? Yes No

If NO, the institution requests:

Deletion of the Program (if so, complete Program Modification Form, specifically item (1) Program Deletion);

OR

Extension of the Review Period (if so, provide a brief explanation of the future plans for the program that will enable it to meet the productivity requirements and the time frame required to accomplish these plans (*limit response to two pages*).

Southeastern Oklahoma State University
REQUEST FOR PROGRAM MODIFICATION

Department submitting request: Biological Sciences and Chemistry, Computer, and Physical Sciences

Date: 9/6/2011

Department Chair's signature: *Jason Deleh* 9/7/11

x2286

Dean's signature:

Coordinator's signature (if applicable): *Lucinda Dejean* 09/07/11

Extension number: x2444

Degree program designation, e.g. B.S. (Level II): B.S.

Three-digit program code: 104

Current title of degree program (Level III):

Bachelor of Science in **Biotechnology**

- With options in: A.
B.
C.
D.
E.

VPAA Office Use Only: CIP Code _____

TYPE OF REQUEST: Check those appropriate and complete appropriate pages **ONLY!**

- (1) Program Deletion
- (2) Program Suspension
- (3) Change of Program Name and/or Degree Designation
- (4) Option Addition—including Minors and emphases
- (5) Option Deletion—including Minors and emphases
- (6) Option Name Change—including Minors and emphases
- (7) Program Requirement Change
- (8) Other Degree Program Modification

Complete and return ONLY this cover sheet AND the appropriate page specifying the requested modification!

Committee Action (as applicable): Committee Chairs please initial and date action.

Teacher Education	Graduate Council	Curriculum Committee	Academic Council
Approved:	Approved:	Approved:	Approved:
Not Appr:	Not Appr:	Not Appr:	Not Appr:
Date:	Date:	Date:	Date:

(1) Program Deletion

Southeastern Oklahoma State University
REQUEST FOR PROGRAM MODIFICATION

(continued)

Program Name: B.S. in BIOTECHNOLOGY Three-digit program code: 104

(1) PROGRAM DELETION **Delete program and all options**

Are students still enrolled in degree program? No Yes

If yes, how many? 15 Expected date of graduation for last student: 5/1/2015

Number of courses which will be deleted as a result of this action: none

Funds available for reallocation: No Yes

Which departments/programs will receive the reallocated funds? none

Reason for requested action (attach no more than one page if space provided is inadequate):
Failure to meet minimum major and graduate criteria as specified by OSRHE.

Northwestern Oklahoma State University

Date: October 19, 2011
To: Regional University System of Oklahoma
Academic Affairs Committee
Connie Reilly, Chair
From: Dr. Janet Cunningham, President
Re: Academic Affairs Agenda Item – November 4, 2011

Please place Northwestern Oklahoma State University on the Academic Affairs Committee Agenda for the November 4, 2011, meeting of the Regional University System of Oklahoma Board of Regents. We request approval of the following items:

Approval from Higher Learning Commission – expansion of distance education up to 20% or more of total degree programs

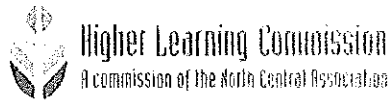
Approval from Higher Learning Commission – two additional locations, Oklahoma Panhandle State University and James Crabtree Correctional Center

Approval from Higher Learning Commission – change to Ponca City location

Attached are copies of the letters from the Higher Learning Commission. If you have any questions or need additional information, please do not hesitate to contact me.

JC:md

Attachments (2)



2110 Spring Street, Suite 2000 Chicago, IL 60611-1911
Tel: 773.399.8800 Fax: 773.399.7440

August 19, 2011

President Janet Cunningham
Northwestern Oklahoma State University
709 Oklahoma Blvd.
Ava, OK 73717

Dear President Cunningham:

This letter is formal notification of the action taken concerning Northwestern Oklahoma State University by the Higher Learning Commission. At its meeting on August 15, 2011, the Institutional Actions Council (IAC) approved extension of your accreditation to include closing the location at University Center of Ponca City, 1105 South Pine, Ponca City, OK and opening an additional location at University Center of Ponca City, 2800 North 1st Street, Ponca City, OK.

I have enclosed your institution's Statement of Affiliation Status (SAS) and Organizational Profile (OP). The SAS is a summary of your organization's ongoing relationship with the Commission. The OP is generated from data you provided in your most recent Annual Institutional Data Update. If the current Commission action included changes to the demographic, location, or distance education information you reported in your Annual Institutional Data Update, we have made the changes on the Organizational Profile. No other organizational information was changed.

The attached Statement of Affiliation Status and Organizational Profile will be posted to the Commission Web site on Tuesday, September 6. If you have questions about these documents, please contact Karen J. Solomon, your staff liaison before Friday, September 2. Information about notifying the public of this action is found in Chapter 8.3.3 and 8.3.4 of the *Handbook of Accreditation*, Third Edition.

Please be aware of Commission policy on planned or proposed organizational changes that require Commission action before their initiation. You will find the Commission's change policy at neable.org/information-for-institutions/institutional-change.html. If you have questions about how planned institutional changes might affect your relationship with the Commission, please write or call Karen J. Solomon.

On behalf of the Board of Trustees, I thank you and your associates for your cooperation.

Sincerely,

Sylvia Manning
President

Enclosures: Statement of Affiliation Status
Organizational Profile

cc: Board Chair



730 South Lincoln Street, Suite 7-500 • Chicago, IL 60606-1411
Tel: 773-399-6000 • Fax: 773-263-7440 • www.hlc.edu

September 26, 2011

President Janet Cunningham
Northwestern Oklahoma State University
709 Oklahoma Blvd.
Alva, OK 73717

Dear President Cunningham:

This letter is formal notification of the action taken concerning Northwestern Oklahoma State University by the Higher Learning Commission. At its meeting on September 19, 2011, the Institutional Actions Council (IAC) approved the extension of your accreditation to include the expansion of distance education up to 20% or more of total degree programs. A Progress Report on distance delivery supplying enrollment and retention data and information on the development and implementation of student support services targeted to online students is due by March 1, 2012.

The September 19, 2011 Institutional Actions Council (IAC) also approved the opening of two additional locations: Oklahoma Panhandle State University, Box 130, Goodwell, OK 73939-0728 and James Crabtree Correctional Center, RR1, Box 8, 3rd and Murray, Helena, OK 73741

I have enclosed your institution's Statement of Affiliation Status (SAS) and Organizational Profile (OP). The SAS is a summary of your organization's ongoing relationship with the Commission. The OP is generated from data you provided in your most recent Annual Institutional Data Update. If the current Commission action included changes to the demographic, location, or distance education information you reported in your Annual Institutional Data Update, we have made the changes on the Organizational Profile. No other organizational information was changed.

The attached Statement of Affiliation Status and Organizational Profile will be posted to the Commission Web site on Tuesday, October 4. If you have questions about these documents, please contact Karen J. Solomon, your staff liaison before Monday, October 3. Information about notifying the public of this action is found in Chapter 8.3.3 and 8.3.4 of the *Handbook of Accreditation*, Third Edition.

Please be aware of Commission policy on planned or proposed organizational changes that require Commission action before their initiation. You will find the Commission's change policy at ncable.org/information-for-institutions/institutional-change.html. If you have questions about how planned institutional changes might affect your relationship with the Commission, please write or call Karen J. Solomon.

On behalf of the Board of Trustees, I thank you and your associates for your cooperation.

Sincerely,

Sylvia Manning
President

Enclosures: Statement of Affiliation Status
Organizational Profile
cc: Board Chair

October 21, 2011

Board of Regents
Regional University System of Oklahoma
Landmark Tower, Suite 320
3555 NW 58 Street
Oklahoma City, OK 73112

RE: Academic Affairs Agenda Items-November 4, 2011
A. Letters of Intent
B. Nomenclature Change

Dear Board:

Please place the University of Central Oklahoma on the Academic Affairs Committee Agenda for the November 4, 2011, Regional University System of Oklahoma meeting. We would like to request the following:

A. Letters of Intent

The University of Central Oklahoma would like to inform you of its intent to submit requests for the following programs:

1. **M.A. Human Communication**
2. **M.PA. Public Administration**
3. **M.Ed. Bilingual Education/Teaching English as a Second Language (TESL)**
4. **M.Ed. Secondary Education**

1. M.A. Human Communication

The primary need for the proposed Master of Arts in Human Communication is to provide advanced research skills at a higher level that would allow UCO's graduates to function more effectively in their chosen area.

2. M.PA. Public Administration

Public Administration currently exists as an option under the Master of Arts in Political Science within the College of Liberal Arts. UCO is requesting the current Master of Arts be recast as a conventional MPA to be consistent with similar degree programs nationally and internationally. This request is simply to update the status of a longstanding, existing degree, which has already enjoyed considerable success in terms of its growth and impact on Oklahoma communities.

3. **M.Ed. Bilingual Education/Teaching English as a Second Language (TESL) and**
4. **M.Ed. Secondary Education** (This request is part of a department curriculum realignment.) Bilingual Education/TESL and Secondary Education currently exist as options under the Master of Education in Education. This request will allow both Secondary Education and Bilingual Education/TESL be established as stand-alone programs to be housed within their respective departments, Professional Teacher Education and Curriculum and Instruction within the College of Education. Both of these majors are solid in terms of number of students and projected growth.

- B. Nomenclature Change** – The University of Central Oklahoma would like to request that the College of Business Administration be changed to the College of Business with an effective date of Fall 2012.

Rationale: Consultations with students, faculty, staff, alumni and the Dean’s Advisory Board support this proposed name change for three reasons. The proposed name:

- Reflects current national trends in the naming of business schools
- Provides greater clarity to stakeholders regarding the nature of the College’s programs
- Enhances the College’s branding efforts

Student Impact: Focus group interviews with students and alumni indicate that the inclusion of the term “Administration” produces an incorrect impression regarding the nature of the College’s programs and the employment opportunities available to students. Consequently, this proposal would provide students with greater clarity as to the nature of the College’s programs.

Resources: The only expenses related to this name change would be those associated with the reprinting of materials with the new college name and logo.

Please contact this office if you have any questions regarding this matter.

Respectfully,

Don Betz, Ph.D.
President

TO: Board of Regents of the
Regional University System of Oklahoma
Belva Howard, Chair

FROM: Randy L. Beutler, President

DATE: October 19, 2011

SUBJECT: Building Committee Agenda Items - November 4, 2011

Please place Southwestern Oklahoma State University on the Building Committee agenda for the November 4, 2011, Board of Regents of the Regional University System of Oklahoma meeting regarding the following items:

- Old Science Building, Project #6650060 - We request permission to bid and award exterior restoration for the southwest quarter of this building at a cost not to exceed \$30,000. Funds for this project are budgeted in the Educational and General I Fund repairs and renovation account.
- Access Improvements, Project #6650041 - We request permission to bid and award contracts for the completion of phase two of the Old Science, Stafford and Administration Buildings access project estimated to cost \$100,000. This would include sidewalks and ramps to improve access in this area as well as to the north entrance of the Memorial Student Center. Funds for this project are budgeted in the Educational and General I Fund Repairs and Renovation account.
- Chemistry, Pharmacy and Physics Building - Pharmacy Research Laboratory Development, Project #6650021 - We request permission to bid and award contracts for the development of additional laboratory space for the College of Pharmacy. The budget for this project is approximately \$250,000 and the project will be charged to our 295 Capital Fund.

Also, we also request approval to engage MA+ for the required architectural and engineering services for this project.

- We are developing a naming/fundraising project that would honor the services of long-time Athletic Director, Cecil Perkins.

If you need additional information regarding these items, please let me know.

csi



1100 E. 14th Street, PMB P-8 Ada, OK 74820-6999

Office of the President

TO: Regent Belva Howard,
Chair - Building Committee

FROM: John R. Hargrave

DATE: November 4, 2011

SUBJECT: Items for Agenda

A. School of Business **and** Conference Center (230-0057)

Easement Change: School of Business and Conference Center

We request approval to abandon the existing easement described as follows:

The North Property Line Easement for lots 12, 13, 14, 15, and 16 of Block 10, Donaghey Addition to the City of Ada, Pontotoc County, Oklahoma.

Additionally we request to relocate the abandoned easement to the following location:

The South Property Lines for lots 1, 2, 3,4,5, and 6 of Block 10, Donaghey Addition to the City of Ada, Pontotoc County, Oklahoma.

This action allows for the relocation of the electric service lines to make way for the construction of the School of Business and Conference Center. The lines will basically be moved from the south side of the alley to the north side of the alley. All lots described are owned by ECU.



OFFICE OF THE PRESIDENT

SOUTHEASTERN OKLAHOMA STATE UNIVERSITY
1405 N. FOURTH AVE., PMB 4236
DURANT, OK 74701-0609

580-745-2500
FAX 580-745-2515
WWW.SE.EDU

October 17, 2011

Regent Belva Howard
Regional University System of Oklahoma
Landmark Tower, Suite 320
3555 N. W. 58th Street
Oklahoma City, OK 73112

RE: November 2011 Building Committee

Dear Regent Howard:

Please place Southeastern Oklahoma State University on the Building Committee Agenda for October 2011 for the following item:

1. Request approval to purchase property located at 1322 & 1324 N. 5th, Durant, Oklahoma for \$130,000. Description: Lots 9 & 10 being 25' X147.9' each, and lots 11 & 12 being 24.3' X 147.9' each, making a total land area of approximately 14,583 sq ft or approximately 1/3 of an acre. Both residences were built in 1938, living area 1,120 sq ft and 1,766 sq ft, and have been rental property for some time. Cost per sq. ft. \$45.05. Location: Adjacent to university parking lot and just south of the Welcome Center. Funding: Auxiliary-Special Agency Fund 700.

Please let me know if additional information is needed.

Respectfully,

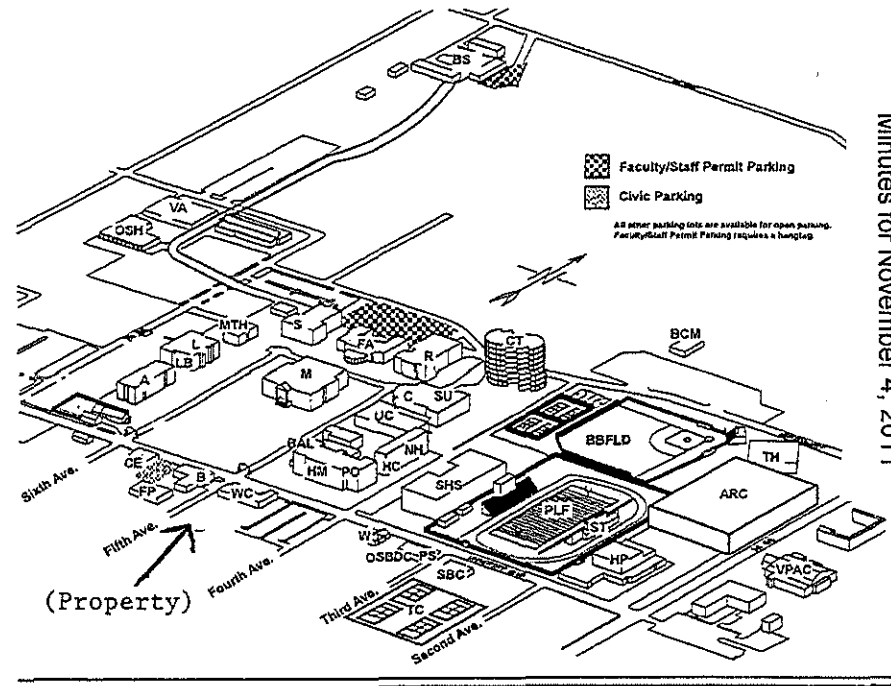
A handwritten signature in cursive script that reads "Larry Minks".

Dr. Larry Minks
President

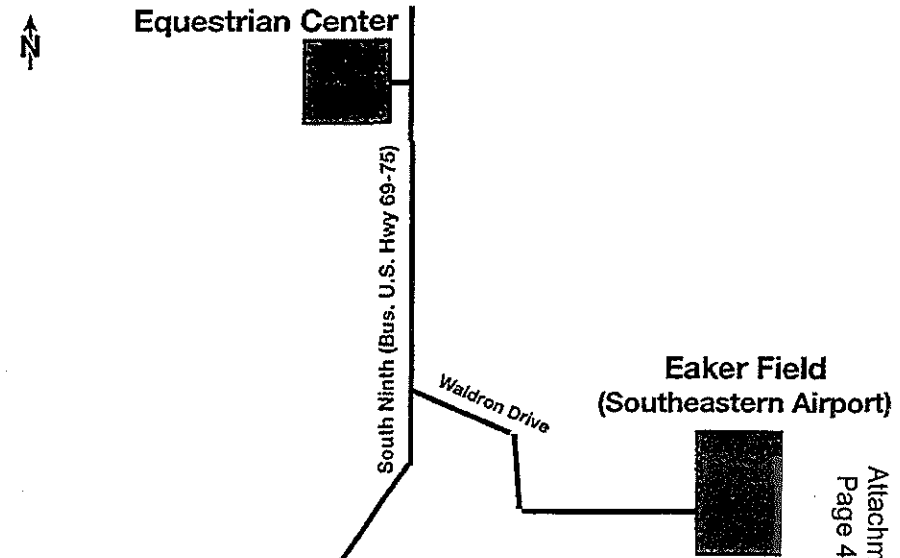
Building Designations

A.....	Administration
ARC.....	Arena and Convocation Center
B.....	Bookstore
BAL.....	Ballroom
BBFLD.....	Baseball Field
BS.....	Biological Sciences
BCM.....	Baptist Collegiate Ministries
C.....	Cafeteria (in New Student Union)
CE.....	Computer Science/CIS Faculty Offices
CT.....	Chickasaw/Choctaw Towers
EC.....	Equestrian Center
EF.....	Eaker Field
FA.....	Fine Arts Building
FP.....	Federal Programs (EOC and Talent Search)
HC.....	Health Center
HM.....	Hallie McKinney Hall
HP.....	Bloomer Sullivan Gymnasium (HPER)
L.....	Henry G. Bennett Library
LB.....	Henry G. Bennett Library Basement
M.....	Morrison Hall
MG.....	Magnolia Room
MTH.....	Math Building
NH.....	North Hall/North Hall Dorm
OSBDC.....	Oklahoma Small Business Development Center
OSH.....	Occupational Safety and Health
PLF.....	Paul Laird Field (Football)
PO.....	Post Office
PS.....	Public Safety
R.....	Russell Building
S.....	Science Building
SBC.....	Student Bible Center
SHS.....	Shearer Hall & Suites
ST.....	East Stadium
SU.....	Student Union
TH.....	Theatre Building
TC.....	Tennis Complex
UC.....	University Center Building
VA.....	Visual Arts Building
VPAC.....	Visual & Performing Arts Center
W.....	Wesley Center
WC.....	Welcome Center

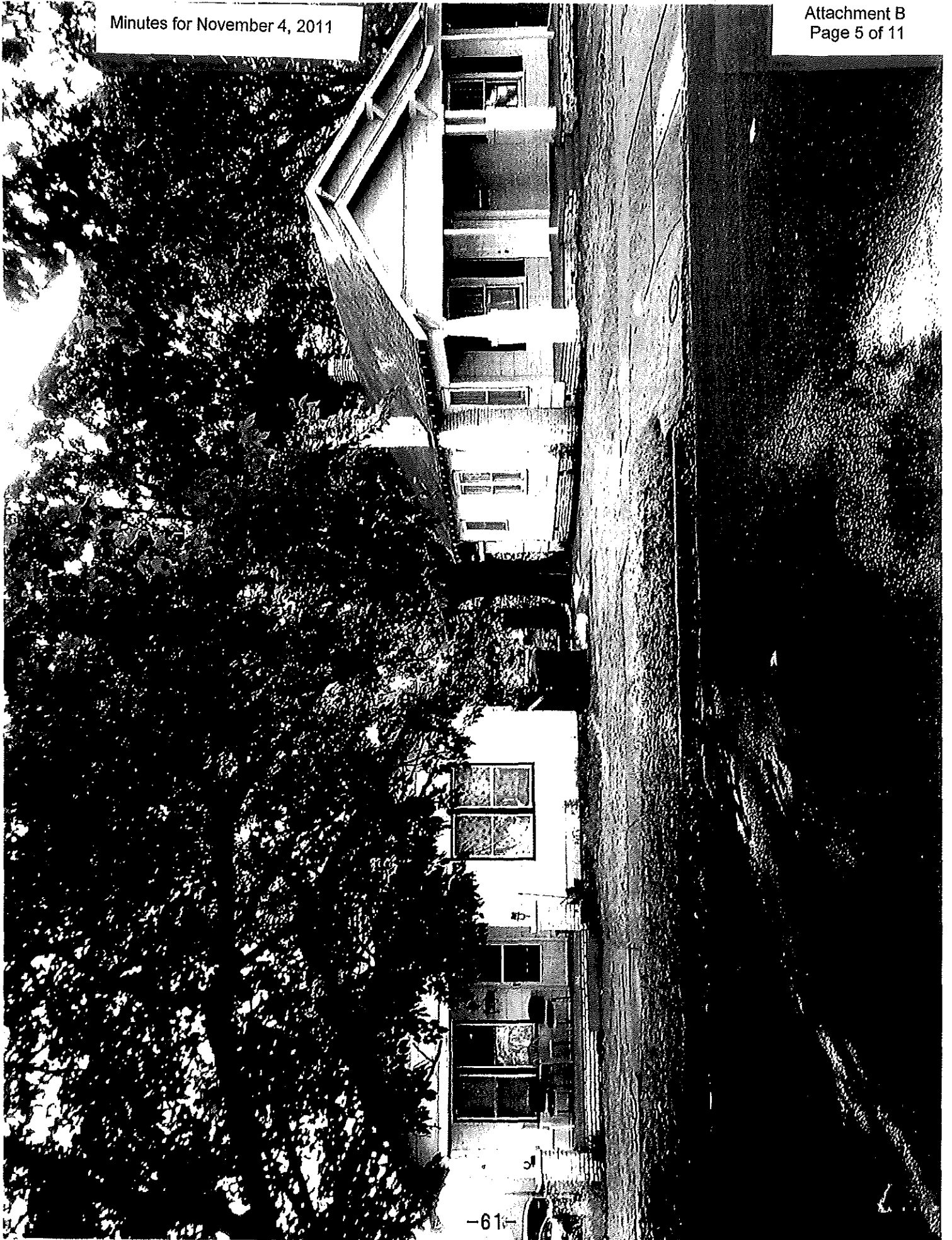
Campus Map



Minutes for November 4, 2011



Attachment B
Page 4 of 11



Date: November 3, 2011

To: Board of Regents of the Regional University System of Oklahoma
Building Committee Chairperson, Belva Howard

From: President Don Betz

Re: Building Committee Agenda Items – November, 2011

1. Ratification Items:

- a) Ratification of emergency approval for lease of property at 329 East Sheridan, Oklahoma City, for the ACM@UCO Performance Lab in Bricktown. Emergency approval granted by Building Committee Chair Belva Howard and Board Chair Michael Mitchel. This lease replaces the former lease at 323 E. Sheridan. The former landlord requested an immediate 50% increase in rates from \$5.54/sf to \$8.31/sf and a decrease from three years to one on the lease term. The new landlord offered a 5 year lease with rates beginning at \$6/sf in year one and growing to \$11/sf in year five. Current retail rates in Bricktown are \$12/sf. The spaces are each 6,500 square feet.

2. Change Orders: None to report

3. Information Items:

- a) Howell Hall Science Laboratories project #120-0010 Fund, Design, Award to KBR, Inc., the Job Order Contractor for the University, for Renovations to the Second floor of HOH for Administrative Offices. The project budget is \$110,000. (Donor Funds, E&G Funds)

Northwestern Oklahoma State University

Date: October 19, 2011

To: Regional University System of Oklahoma
Building Committee
Belva Howard, Chair

From: Dr. Janet Cunningham, President

Re: Building Committee Agenda Items – November 4, 2011

Please place Northwestern Oklahoma State University on the Building Committee agenda for the November 4, 2011, meeting of the Regional University System of Oklahoma Board of Regents for the following items:

Project #505-0005 Herod Hall Roof Replacement & Carter Hall Roof Repair

We request permission to retain the services of Easley Associates Architects, Enid, Oklahoma, for the purpose of bidding and replacing the roof on Herod Hall and repair work to the roof of Carter Hall.

Project #505-0005 Herod Hall Roof Replacement & Carter Hall Roof Repair

We request permission to bid and award the project to replace the roof on the Herod Hall Building and to perform repair work on the Carter Hall Building. Total cost for the project will not exceed \$125,000. Funding for the project will come from Section 13/New College/Offset funds.

Project #505-0015 Turf for Baseball Field

We request permission to design, bid, and award a contract to install artificial turf on the baseball infield at Myers Stadium. Total cost for this project will not exceed \$275,000. Funding for the project is from a private donor.

Informational Item:

Project #505-0028 Renovation to Science Building—Elevator

Attached is tabulation showing a change for the renovation of adding an elevator to the Science Building. The one change to the project was to increase some mechanical work and additional fire alarm system that was not included in the original bid. The change order increase is \$7,579 which brings the total project

cost to \$181,725. Funding for this project is from the United States Department of Agriculture Rural Development and Section 13/New College/Offset funds. (See Attachment)

Attachment (1)

BUILDING PROJECTS

REGIONAL UNIVERSITY SYSTEM OF OKLAHOMA
 FAX NO. (405) 942-8847

Prepared by: David Pecha
 Date: 10/18/2011

University:	Northwestern Oklahoma State University	Contractor:	American Iron Construction
Building Project:	Renovation to Science Building--Elevator #5050028	Original Contract Amount:	\$ 174,146.00
Original Board Approval Date:	September 18, 2009 (approval to bid project)	Approval Date:	
Original Board Approval Amount:	\$174,146.00	Final Inspection Date:	
Type of Funding:	US Dept. of Ag Rural Dev & Sect 13/New College/Offset	Final Contract Amount:	

Date Approved	Change Order No.	Description of Request	Resolution Number	Dollar increase (Decrease)	Total Cumulative Change Orders	%	Total Cumulative Project Cost
	1	Addition for mechanical & fire alarm work		\$ 7,579.00	\$7,579.00	4.3521%	\$ 181,725.00
				\$ 7,579.00			

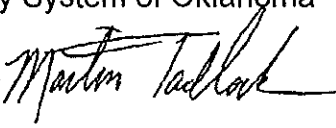
Contracts of one million dollars (\$1,000,000) or less shall not exceed a fifteen percent (15%) cumulative increase in original contract amount.
 Contracts of over one million dollars (\$1,000,000) shall not exceed the greater of one hundred fifty thousand (\$150,000) or a ten percent (10%) cumulative increase in the original contract amount



NORTHEASTERN STATE UNIVERSITY
Office of the President

DATE: October 24, 2011

TO: Regent Belva Howard, Chair
Building Committee
Regional University System of Oklahoma

FROM: Dr. Martin Tadlock 
Interim President

SUBJECT: Building Committee Agenda Items –November 3, 2011

Northeastern State University requests approval for the following projects:

Project #485-0066 – Wellness Center

NSU requests approval to begin the screening and selection process to hire an Architect for the construction of a Wellness Center. This project is listed on the University's Capital Master Plan and will be funded with Master Lease and Capital Reserves.

Project #485-0072 – Multi-Purpose Event Center

NSU requests approval to demolish and remove 3 houses located on existing University Property in Tahlequah as follows:

130 North Street
128 North Street
209 W Allen Road.

These property demolitions are for the purpose of preparing the construction site for the Event Center. The estimated cost of this project is not to exceed \$63,000. This project will be funded through Section 13/New College Funds.

601 N Grand Avenue, Tahlequah, Oklahoma 74464-2399, USA
Phone (918) 444-2000 · Fax (918) 458-2015 · tadlock@nsuok.edu · www.nsuok.edu

Northeastern State University
Page 2 – Building Committee Items
November 2011

Project #485-0037 – Property Demolition and Removal

Request approval to demolish and remove three houses located on existing University Property as follows:

1208 North Seminary
102 Minor Street
104 Minor Street

These property demolitions are for the purpose of property expansion on the West side of the Campus.

The estimated cost of this project is not to exceed \$37,000. This project will be funded through Section 13/New College Funds.

Project #485-0031 – Fine Arts Building Renovation

NSU requests approval to bid and award a contract to hire a Contractor to provide and install a remote controlled motorized performance light bar system in the Center for Performing Arts located on the Tahlequah Campus. This will prevent our staff and students from the need to climb ladders and into the rafters to adjust lighting locations.

The estimated cost of this project is not to exceed \$100,000. This project will be funded through surplus, unexpended 2005 State Bond issue funds.

An internal university reconciliation of capital fund balances revealed a cash balance of \$99,991.25 remaining in the 2005 State Bond funds. During further research, it was found that two invoices were erroneously paid from 295 Capital Reserve funds that should have been paid from the bond funds. This project was funded from both sources, and these invoices were paid against the wrong source of funds in error during the accounts payable process. This occurred during a period of transition between employees responsible for capital budgeting activities. We have transitioned these duties to a more appropriate department, and are reviewing our internal processes to ensure reconciliations are timely.

In discussions with the OSRHE staff responsible for managing the State Bond issues for higher education, it was recommended that it would be appropriate to go



Office of the President

TO: Board of Regents of the
Regional University System of Oklahoma
Jan Gordon, Chair

FROM: Randy L. Beutler, President

A handwritten signature in cursive script, appearing to read "Randy L. Beutler", is written over the printed name.

DATE: October 19, 2011

SUBJECT: Audit and Finance Committee Agenda Items – November 4, 2011

Please place Southwestern Oklahoma State University on the Audit and Finance Committee agenda for the November 4, 2011, Board of Regents of the Regional University System of Oklahoma meeting.

We would like to meet with the committee to request permission to amend the FY12 Educational and General I budget to increase both our revenue estimate and expenditure authority. This change would increase our revenue by \$1,025,400 to a total of \$49,820,943 and our expenditures by \$400,297 to a total of \$50,900,297. The changes would increase our estimated reserve balance by \$429,627 to 8.63 percent of the authorized expenditures.

If you need additional information regarding this budget request, please let me know.

csl

**REGIONAL UNIVERSITY SYSTEM OF OKLAHOMA (RUSO)
INTERNAL AUDIT PLAN
FY2012**

Engagement Name	Risk Score	Board/Mgmt. Importance (H,M,L)	Estimated Hours
1. Encumbrance & Pre-Audit System (Alternate Claims)	N/A	--	8-16
2. Bursar Revenue Collections	32	M	16-24
3. Assessment & Billing of Tuition & Fees	32	M	16-24
4. Purchasing	33	M	16-24
5. Procurement Card	33	M	16-24
6. Follow-up on Prior Year Audit Findings	--	--	16-24
7. Other Areas of Board and/or Management Interest	--	--	24-32
8. Report Writing and Meetings with University staff	--	--	24-32
Total Planned Hours			136 - 200 (average 168)

**REGIONAL UNIVERSITY SYSTEM OF OKLAHOMA (RUSO)
LIST OF INTERNAL AUDIT AREAS & PROPOSED SCHEDULE
ASSESSMENT OF RISK & IMPORTANCE**

Listing of Internal Audit Areas	Risk Assessment & Evaluation of Importance		Estimated Hours & Planned Frequency		Proposed Schedule per Fiscal Year				
	C&A Risk Score	Board/Mgmt. Importance (H,M,L)	Estimated Hours	Planned Frequency	2009	2010	2011	2012	2013
1. Encumbrance & Pre-Audit System (Alternate Claims)	Statutorily Required		8-16	Annual	✓	✓	✓	✓	✓
2. University Bookstore – contract compliance	27	M	16-24	4 years			✓		
3. University Food Services – contract compliance	27	M	16-24	4 years			✓		
4. Cash-on-Hand	32	M	8-16	3 years		✓			✓
5. Bursar Revenue Collections	32	M	16-24	3 years	✓			✓	
6. Assessment & Billing of Tuition & Fees	32	M	16-24	3 years	✓			✓	
7. Human Resources/Employment Services	36	M	16-24	2 years	✓		✓		✓
8. Payroll	36	H	16-24	2 years	✓		✓		✓
9. Capital Assets	33	M	16-24	3 years		✓			✓
10. General Ledger Account Reconciliations	29	M	8-16	4 years		✓			
11. Purchasing	33	M	16-24	3 years	✓			✓	
12. Procurement Card	33	M	16-24	3 years	✓			✓	
13. Follow-up on Prior Year Audit Findings	Required by Audit Standards		8-16	Annual	✓	✓	✓	✓	✓
14. . Other Areas of Board and/or Management Interest	Based on Board and/or/ Management Request		24-32	As Requested		✓	✓	✓	✓

Northwestern Oklahoma State University

October 19, 2011

Regional University System of Oklahoma
Landmark Towers, Suite 320
3555 N.W. 58th Street
Oklahoma City, OK 73112

Dear Board Members:

The recommendations of Northwestern Oklahoma State University are as follows:

I. PURCHASES

The following purchases are being made in accordance with Board Policy (over \$25,000 and under \$100,000):

Professional audit fees, Cole and Reed, Oklahoma City, Oklahoma, at an approximate cost of \$29,000 (Fund 290, E & G Funds)

Athletic insurance premium to Borden Perlman, Lawrenceville, New Jersey, at a cost of \$25,000 (Fund 290, E & G Funds)

Northwestern Oklahoma State University

II. GRANTS AND CONTRACTS

**Title III, Strengthening Institutions Program (SIP)\$300,162
(Academic Success for At-Risk Students)**

A grant from the U.S. Department of Education to improve graduation and retention rates, increase faculty development opportunities, improve tracking of at-risk students, and increase fiscal stability by improving student retention. Specifically, the project will create an Academic Advising Center; provide software to facilitate intrusive advising and support redesign of gateway courses. Dr. Mike Knedler, Dean of the School of Arts and Sciences, is the grant coordinator.

Oklahoma Small Business Development Center.....\$55,500

An additional allocation to the current period OSBDC grant, to hire one additional Business Development Specialist in the University's Enid campus office. Grant funds are from the Small Business Administration and the Oklahoma Department of Commerce through Southeastern Oklahoma State University.

Upward Bound.....\$19,558

An additional allocation to the current period Upward Bound grant from the U.S. Department of Education to increase the academic and motivational levels of eligible enrollees so that such person may complete secondary school and successfully pursue post-secondary educational programs. Ten high schools in three northwest Oklahoma counties will be targeted. Jaunita Noble is the program director.

**LS-OKAMP-STEM.....\$10,000
(Louis Stokes Oklahoma Alliance for Minority Participation
In Science, Technology, Engineering and Mathematics)**

Northwestern Oklahoma State University

A grant in cooperation with Oklahoma State University and the National Science Foundation to encourage participation of minority students in the areas of science, mathematics, engineering and technology. Dr. Tim Maharry, Associate Professor of Mathematics and Chair, Mathematics and Computer Science, is the grant coordinator.

TOTAL GRANTS.....\$385,220

III. INFORMATIONAL ITEMS

Scholarships and Donations

The Alva Odd Fellows Lodge #44 has contributed \$20,603.32 for scholarships.

An anonymous donor has contributed \$20,000 for the Newkirk-Kay County First Year scholarship.

The Hamm Foundation has contributed \$15,000 for the NWOSU-NOC Bridge Project.

Bert Mackie has contributed \$15,000 for the NWOSU-NOC Bridge Project.

Kenneth and Sue Fellers have contributed \$10,000 to the Fellers Scholarship Endowment.

Sincerely,

Janet Cunningham, Ed.D.
President

JC:md

Northeastern State University



NORTHEASTERN STATE UNIVERSITY
Office of the President

October 24, 2011

Regional University System of Oklahoma
3555 N.W. 58th Street, Suite 320
Oklahoma City, OK 73112

Dear Board Members:

The recommendations of Northeastern State University are as follows:

I. **PERSONNEL**

A. **FACULTY APPOINTMENTS**

Mr. Stephanie A. Ingold has been appointed Instructor in Library Services, effective August 22, 2011, at an academic salary rate of \$40,008. This is a full-time, non-tenure track position replacing Ms. Linda Summers.

Ms. Ingold holds the following degrees: M.S., University of Oklahoma; and B.S., Oklahoma State University.

Her professional experiences include: Front Desk Librarian, Stratton Taylor Library, Rogers State University – two years; and Head Library Media Specialist, Charles Clemens Media Center, Thomas A. Edison High School – ten years.

B. **CHANGE OF STATUS**

Dr. Patrick D. Harrington, Assistant Professor of Computer Science will change to a tenure track appointment, effective August 15, 2011

Northeastern State University

Dr. Robyn Pursley, Instructor in Theatre, has received an increase from \$40,100 to \$41,100 per academic year, effective August 15, 2011. The increase is being granted because Dr. Pursley has completed all requirements for the degree of Doctor of Education in Higher Education. The Ed.D. degree was obtained from the University of Arkansas in August of 2011. Her status will change from Instructor to Assistant Professor of Theater on a tenure track appointment.

Dr. Shannon Unger, Assistant Professor of Music, has received an increase from \$41,000 to \$42,000 per academic year, effective August 15, 2011. The increase is being granted because Dr. Unger has completed all requirements for the degree of Doctorate of Musical Arts. The D.M.A. degree was obtained from the University of Memphis.

Dr. Paul Westbrook, Dean of the College of Liberal Arts, will return to faculty status as Professor of Communication, effective October 1, 2011. His salary will be at an academic year rate of 80,000, effective January 1, 2012.

Dr. Mike Chanslor, Associate Dean of the College of Liberal Arts and Associate Professor of Communication has been appointed Interim Dean of the College of Liberal Arts, effective October 1, 2011, at a fiscal salary rate of \$83,220. He is replacing Dr. Paul Westbrook

Dr. Teri Cochran's title as Interim Associate Director of Enrollment Management will revert to Director of Student Financial Services. Her salary will remain the same.

C. LEAVE OF ABSENCE

Dr. Jeffrey Lowenthal, Assistant Professor of Management has been approved for leave of absence with pay, effective September 9, 2011.

II. PURCHASES

The following purchases are presented as information items in accordance with Board policy:

Chartering of Basketball Busses for all road trips (Travel Tours Charter Service, Wagoner).....\$38,986.80

III. GRANTS AND CONTACTS

The University has received notification of funding for the following proposals:

Northeastern State University

Celebration of Teaching 2011 - 2012 \$7,000.00

A grant from the Oklahoma State Regents for Higher Education. Funding to support the Celebration of Teaching Conference held in Spring 2012. The conference will focus on university students in the teacher education program and minority students from public school systems in northeastern Oklahoma. The project director is Dr. Deborah Landry.

NCAA Coach Enhancement Grant \$16,000.00

A grant from National Collegiate Athletic Association (NCAA). Funding to recognize the need to address the issues of access, recruitment, selection and long-term success of women, ethnic minorities and other individuals in Division II who seek to overcome hiring barriers by securing funds to assist in creating an assistant coach position in Division II. The project director is Mr. Matt Cochran.

Inbre – Jr. Investigator Ischemic Stroke 2011 - 2012 \$61,956.00

A grant from OU Health Science Center through National Institutes of Health. Funding to produce a novel blood clot-dissolving enzyme against acute ischemic stroke by way of expressing the fibrinolytic enzyme (DSPAs) from the salivary gland of blood-feeding vampire bats in transgenic tobacco plants for the large-scale production of active and safe clot-dissolving proteins. The project director is Dr. Kevin Wang.

Burying Beetle 2011 – 2012 \$45,154.00

A grant from Oklahoma Military Department to collect Burying Beetles, enumerate according to sex, mark with single bee tag and release unharmed. Monitoring activities shall be conducted at established land condition trend analysis sites. The American Burying Beetle as added to the federal endangered species list in July 1989 by the U. S. Department of Interior. The project director is Dr. Amy Smith.

Native American Serving Non-Tribal Institutions Yr. I of V \$358,205.00

A grant from the U. S. Department of Education to provide for a comprehensive approach to the delivery of services designed to enhance the overall postsecondary educational experience of students, particularly the low income, American Indian population. The project director is Dr. Ron Cambiano.

NSU Tahlequah Literacy Outreach Project 2011 - 2012 \$2,982.00

A grant from Dollar General Literacy Foundation to assist the Tahlequah Reading Faculty with resources to develop literacy outreach projects that will assist student teachers in their weekly tutor sessions for at-risk students. These at-risk students are located in local elementary schools. Through guidance and instruction from faculty, student teachers use research-based practices with at-risk elementary students to develop their literacy skills. Project Director is to be determined.

McAlester Scottish Rite Year V 2011 – 2012 \$26,300.00

Northeastern State University

A grant from McAlester Scottish Rite to provide Speech/Language screening, diagnostic and intervention services along with clinical supervision at the NSU-Muskogee campus for Fall 2011/Spring 2012/Summer 2012 semesters. Project Director is Dr. Karen Patterson.

RUSO Violence Prevention Program Extension Year II of II \$55,096.00

A grant from the U. S. Department of Justice through East Central University to provide for the continuation of the programs established through the past three years at Northeastern State University for the prevention of violent crimes against women on campus. Project Director is Dr. Laura Boren.

S-STEM for Talented Undergraduates in Math/Science Yr 5 of 5. \$139,565.00

A grant from National Science Foundation to implement a comprehensive five year project to provide 26 scholarships for students with financial need and academic talent in computer science and/or mathematics. This project will increase educational opportunities for students in financially strained rural areas and will actively recruit underrepresented groups such as Native Americans and women, in computer science and math. Project Director is Dr. Rick Matzen.

Preventing Risky Behaviors 2011 – 2012 \$30,000.00

A grant from Department of Health and Human Services through the National Indian Women’s Health Resource Center to facilitate collaborative activities between NSU and the National Indian Women’s health Resource Center (NIWHRC) to increase awareness of HIV/AIDS risk factors and positively alter the future course of HIV/AIDS among young adult Native American populations. Project Director is Ms. Libby Rogers.

Health and Wellness Initiative for Women 2011 – 2012. \$20,000.00

A grant from Department of Health and Human Services through the National Indian Women’s Health Resource Center to address the health of young, minority women through three major components: 1) Overall women’s health and wellness promotion, 2) HIV/AIDS education and Prevention, 3) Ending violence against women. Project Director is Ms. Libby Rogers

Development of Reservoirs of Antibiotic Resistance 2011 \$10,462.00

A grant from Oklahoma State Regents for Higher Education (OSRHE) to provide release time from teaching obligations for faculty members at Oklahoma regional universities in the preparation of grant applications to support biomedical research projects or curriculum redesign and course development intended to improve the preparation of future biomedical researchers. Dr. Cindy Cisars’ focus will be on the resistance of antibiotics in the environment. Project Director is Dr. Cindy Cisar.

Educational Talent Search Broken Arrow Year I of V 2012 \$230,000.00

A grant from U. S. Department of Education to identify disadvantaged youths with potential for post secondary education, encourage them to complete secondary

Northeastern State University

school and undertake post secondary educational training. To publicize existing forms of student aid and to provide tutorial services for youths being encouraged to undertake or re-enter programs of post secondary education. This program is part of TRIO. The Project Director is Diane Walker.

Educational Talent Search Tahlequah Year I of V 2012. \$230,000.00

A grant from U. S. Department of Education to identify disadvantaged youths with potential for post secondary education, encourage them to complete secondary school and undertake post secondary educational training. To publicize existing forms of student aid and to provide tutorial services for youths being encouraged to undertake or re-enter programs of post secondary education. This program is part of TRIO. The Project Director is Diane Walker.

Oklahoma Alliance for Manufacturing Excellence 2012 \$73,200.00

A grant from Oklahoma Alliance for Manufacturing Excellence and the Oklahoma State Regents for Higher Education to provide a Manufacturing Extension Agent working out of the NSU-BA campus who will assist local manufacturers in various ways to make their businesses more successful. Project Director is Mr. Curtis Evans.

Child Welfare Specialization Trainee Program 2011 - 2012 \$110,000.00

A grant from U. S. Department of Health and Human Services – Children’s Bureau through the University at Albany State University of New York to develop, provide and evaluate leadership training to child welfare mid-managers and supervisors across the country and to develop a national plan for dissemination of best practices in child welfare. NSU plans to expound upon our current academic curriculum foundation offered for social work student with a career interest in child welfare. Stipends will be offered to students who participate in the program as well as opportunities for professional development and leadership skills. Project Director is Dr. Virginia Whitekiller

Oklahoma Alliance for Minority Participation Year III of V \$36,127.00

A grant from National Science Foundation through Oklahoma State University to fund a subcontract to contribute to the national agenda to increase the number of underrepresented minorities receiving B. S. degrees in science, technology, engineering and mathematics. Project Director is Dr. Jody Buckholtz.

Sure Step 2011 – 2012 \$62,750.00

A grant from National Science Foundation through the University of Central Oklahoma to increase the number of students pursuing and receiving associates or baccalaureate degrees in established or emerging fields within science, technology, engineering and mathematics (STEM). The program will initiate proven strategies to encourage a connection among the students, the disciplines, and the faculty and promote critical thinking within the disciplines. Project Director is Dr. Kathi McDowell.

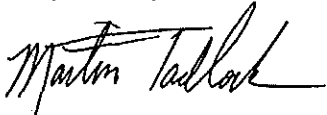
Northeastern State University

Student Academic Success Center \$383,321.00

A grant from U. S. Department of Education to provide for the formation, staffing and facilitation of a centralized Student Academic Success Center (SASC). The Center will provide for initial and continuing multimodal contact with NSU's high risk and minority students in order to increase retention and graduation rates. The Project Director is Brian Searcy.

Total of Grants and Contracts \$1,898,118.00

Respectfully submitted,



Martin Tadlock
Interim President

University of Central Oklahoma

Edmond, Oklahoma

November 4, 2011

Board of Regents Regional University System of Oklahoma
Landmark Towers
3555 N.W. 58th St., Suite 320
Oklahoma City, OK 73112

Dear Board Members:

The recommendations of the University of Central Oklahoma are as follows:

I. PERSONNEL

A. Administrative Position

We request approval to create a Vice President of Government Relations position. The Vice President of Government Relations will report to the President and will be responsible for the development of the university's comprehensive relationships with municipal, county, tribal, state and federal governments to assist the institution and fulfill its mission and vision.

B. Administrative Appointment

We recommend approval for the employment of **Mr. Mark Kinders** to

University of Central Oklahoma

fill the position of **Vice President of Government Relations** at an annual salary of \$120,000.

Mr. Kinders earned his Masters of Public Affairs in 2004 through the Executive Program at Hubert H. Humphrey Institute, University of Minnesota; Masters of Arts, History in 1993, University of Wisconsin-River Falls; and Bachelor of Science in Journalism in 1975, Northwestern University.

Mr. Kinders professional experience includes: Vice President for University Relations at Northeastern State University from 2008 to present and Public Affairs Director at the University of Wisconsin-River Falls (UWRF) from 1985 to 2008. Other duties at UWRF included News Bureau Director (1985-present), Legislative Liaison (1991 to present), Community Relations Director (1992 to present), and Information and Media Liaison to the Kansas City Chiefs (1990 to present). Prior to his employment at UWRF, Mr. Kinders served as Bureau Chief (1982-1985), Features Editor (1975-1982) at various newspapers for Lee Enterprises; and Legislative Bureau Chief (1977) North Dakota Legislature.

C. Faculty Appointments

1) College of Math and Science

Dr. Meghan DeWitt has been appointed **Temporary Assistant Professor**, in the **Department of Mathematics and Statistics**. This is a full-time, non-tenure-track, one-year position effective **August 9, 2011** through **May 9, 2012**.

Dr. DeWitt's degrees are: Ph.D. (2011), Mathematics, and M.A. (2007) Mathematics, both from the University of Wisconsin, Madison, WI; and B.S. (2006), Mathematics, Brigham Young University, Provo, UT.

Her professional experiences include: Teaching Assistant (5), Mathematics; Graduate Student coordinator (2); and Mathematics Tutor (6) all at the University of Wisconsin, Madison, WI; Instructor (1), Mathematics, Pima Community College, Tucson, AZ; Teaching Assistant (3), Mathematics, Brigham Young University; Coordinator

University of Central Oklahoma

(2), Pre-College Enrichment Opportunity Program for Learning Excellence (PEOPLE), Provo, UT. Dr. DeWitt is active in many professional organizations and conducted many university seminars at Brigham Young University and the University of Wisconsin-Madison.

Dr. DeWitt will be paid a salary of \$49,007 based on the CUPA median salary for her discipline

D. Retirements with Resolution

Dr. Jerry D. Allison, Professor in the Department of Information Systems and Operations Management, will retire his position effective June 1, 2012. Dr. Allison has served the University of Central Oklahoma in a full-time capacity since 1992.

Ms. Jill Kelsey, Instructor in the Department of Mass Communications, will retire her position effective August 1, 2012. Ms. Kelsey has served the University of Central Oklahoma in a full-time capacity since 1995.

Dr. Mary S. Monfort, Professor in the Department of Advanced Professional and Special Services, will retire her position effective July 1, 2012. Dr. Monfort has served the University of Central Oklahoma in a full-time capacity since 1982.

Mr. Lee Rucker, Assistant Professor in the School of Music will retire his position effective June 1, 2012. Mr. Rucker has served the University of Central Oklahoma in a full-time capacity since 1982.

E. Sabbatical

The sabbatical leave request for **Dr. Donna Carlon, Professor of Marketing**, for Spring 2012 was rescinded by Dr. Carlon.

II. EXECUTIVE SUMMARY OF NEW GRANTS AND CONTRACTS

Following are the new grants and contracts, which have been awarded

University of Central Oklahoma

since the last Board Letter:

- Minority Teacher Recruitment Center Scholarships - \$10,000 (10/1/11-6/21/11)
OSRHE Minority Teacher Recruitment Center
Bill Pink, College of Education
Provides student scholarships to recruit and retain teachers in high-need urban schools in Oklahoma.
- Minority Educational Encouragement Project: Year 9 College Connection - \$6,902 (10/1/11-6/21/11)
OSRHE Minority Teacher Recruitment Center
Susan Scott, Professional Teacher Education
To recruit middle school and high school students into teacher education programs through structured recruitment activities.
- Especially for Educators - \$7,000 (10/1/11-6/21/11)
OSRHE Minority Teacher Recruitment Center - Special Projects
Bill Pink, College of Education
Karen Youngblood, Center for Professional & Distance Education
Kathy Brown, Professional Teacher Education
Provides support for speakers fees related to the October 4, 2011 event.
- Multicultural Education Institute (Youth Leadership Session) - \$4,000 (10/1/11-6/21/11)
OSRHE Minority Teacher Recruitment Center
Susan Popplewell, College of Education
Provides support for the youth leadership session of the Multicultural Education Institute Conference.
- INBRE Deans Council Chairmanship - \$60,752 (4/1/11 – 3/31/12)
OUHSC/NIH
John Barthell, College of Math & Science
Provides release time salary for Dr. Barthell to Chair the Dean's Council.
- INBRE Intelligent System for Clinical Guidance - \$43,068 (10/1/11-3/31/12)

University of Central Oklahoma

OUHSC/NIH

Jicheng Fu, College of Math & Science

2 ½ Year grant for cooperative research between UCO & OUHSC to develop an intelligent system used for clinical guidance on PSF usage to reduce wheel chair pressure ulcer risk.

- Paralympic Veterans Program - \$75,000 (10/1/11 – 9/30/12)
US Olympic Committee – Federal Pass Through from Department of Veterans Affairs
Katrina Shaklee, Wellness Center
To provide training opportunities for military (veteran) athletes with physical disabilities seeking to become internationally competitive in Paralympic sports.

III. INFORMATIONAL ITEMS FROM PURCHASING

International Business Machines Corporation for equipment required by Information Technology to support the Data Center for Blackboard Analytics.

Source: E&G.....\$33,714.00

Symantec NetBackup Licensing Purchase & Renewal – data recovery software

Source: E&G.....\$92,000.00

Hitachi Physical Storage Solution – physical storage for disk drives to replace old tape backup system

Source: E&G.....\$99,999.00

The University of Central Oklahoma, Office of Information Technology requests permission to obligate additional funds for **FY2012** for the following:

Replacement of Learning Management System (LMS) – Purchase and implementation (including hosting or hardware, software, maintenance,

University of Central Oklahoma

support and professional services) of the learning management system and associated components.

Source: E&G.....\$50,000.00

Respectfully Submitted,

Don Betz
President

RESOLUTION
Regional University System of Oklahoma

WHEREAS, DR. JERRY D. ALLISON, Professor in Information Systems and Operations Management has served the University of Central Oklahoma with honor and distinction for a period of twenty years; and

WHEREAS, DR. JERRY D. ALLISON will retire on June 1, 2012; and

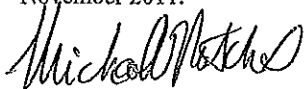
WHEREAS, DR. JERRY D. ALLISON, having served the University of Central Oklahoma for twenty years, has shared his talents and knowledge with countless students and has assisted and inspired them in a variety of career areas. His contributions to the profession of education have been evidenced through memberships in numerous professional organizations and his dedication to the University of Central Oklahoma is evidenced by his service on various departmental, college, and university councils and committees.

WHEREAS, DR. JERRY D. ALLISON's many years of dedicated service deserve special recognition:

NOW, THEREFORE, BE IT RESOLVED, that the *Regional University System of Oklahoma* bestows upon DR. JERRY D. ALLISON the honorary title of "Professor Emeritus of Information Systems and Operations Management" and extends to him an expression of commendation and appreciation for his contribution to the success of the University of Central Oklahoma and wishes for his continued health and happiness and a feeling of joy and satisfaction which rightfully comes to a person who has served so faithfully and honorably as an educator in our state; and

BE IT FURTHER RESOLVED, that this resolution be entered into the official minutes of the *Regional University System of Oklahoma* and a copy, signed by the Chair of the Board, be forwarded to DR. JERRY D. ALLISON.

ADOPTED by the *Regional University System of Oklahoma* this fourth day of November 2011.



Michael W. Mitchel, Chair
Regional University System of Oklahoma

ATTEST:



Richard C. Ogden, Secretary

RESOLUTION

Regional University System of Oklahoma

WHEREAS, MS. JILL KELSEY, Instructor in Mass Communications, has served the University of Central Oklahoma with honor and distinction for a period of seventeen years; and

WHEREAS, MS. JILL KELSEY will retire on August 1, 2012; and

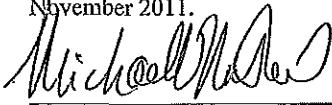
WHEREAS, MS. JILL KELSEY, having served the University of Central Oklahoma for seventeen years, has shared her talents and knowledge with countless students and has assisted and inspired them in a variety of career areas. Her contributions to the profession of education have been evidenced through memberships in numerous professional organizations and her dedication to the University of Central Oklahoma is evidenced by her service on various departmental, college, and university councils and committees.

WHEREAS, MS. JILL KELSEY's many years of dedicated service deserve special recognition:

NOW, THEREFORE, BE IT RESOLVED, that the *Regional University System of Oklahoma* bestows upon MS. JILL KELSEY the honorary title of "Instructor Emeritus of Mass Communication" and extends to her an expression of commendation and appreciation for her contribution to the success of the University of Central Oklahoma and wishes for her continued health and happiness and a feeling of joy and satisfaction which rightfully comes to a person who has served so faithfully and honorably as an educator in our state; and

BE IT FURTHER RESOLVED, that this resolution be entered into the official minutes of the *Regional University System of Oklahoma* and a copy, signed by the Chair of the Board, be forwarded to MS. JILL KELSEY.

ADOPTED by the *Regional University System of Oklahoma* this fourth day of November 2011.



Michael W. Mitchel, Chair
Regional University System of Oklahoma

ATTEST:



Richard C. Ogden, Secretary

RESOLUTION
Regional University System of Oklahoma

WHEREAS, DR. MARY S. MONFORT, Professor of Advanced Professional and Special Services, has served the University of Central Oklahoma with honor and distinction for a period of thirty years; and

WHEREAS, DR. MARY S. MONFORT will retire on July 1, 2012; and

WHEREAS, DR. MARY S. MONFORT, having served the University of Central Oklahoma for thirty years, has shared her talents and knowledge with countless students and has assisted and inspired them in a variety of career areas. Her contributions to the profession of education have been evidenced through memberships in numerous professional organizations and her dedication to the University of Central Oklahoma is evidenced by her service on various departmental, college, and university councils and committees.

WHEREAS, DR. MARY S. MONFORT's many years of dedicated service deserve special recognition:

NOW, THEREFORE, BE IT RESOLVED, that the *Regional University System of Oklahoma* bestows upon **DR. MARY S. MONFORT** the honorary title of "Professor Emeritus of Advanced Professional and Special Services" and extends to her an expression of commendation and appreciation for her contribution to the success of the University of Central Oklahoma and wishes for her continued health and happiness and a feeling of joy and satisfaction which rightfully comes to a person who has served so faithfully and honorably as an educator in our state; and

BE IT FURTHER RESOLVED, that this resolution be entered into the official minutes of the *Regional University System of Oklahoma* and a copy, signed by the Chair of the Board, be forwarded to **DR. MARY S. MONFORT**.

ADOPTED by the *Regional University System of Oklahoma* this fourth day of November 2011.



Michael W. Mitchel, Chair
Regional University System of Oklahoma

ATTEST:



Richard C. Ogden, Secretary

RESOLUTION
Regional University System of Oklahoma

WHEREAS, MR. LEE RUCKER, Assistant Professor in the School of Music, has served the University of Central Oklahoma with honor and distinction for a period of thirty years; and

WHEREAS, MR. LEE RUCKER will retire on June 1, 2012; and

WHEREAS, MR. LEE RUCKER, having served the University of Central Oklahoma for thirty years, has shared his talents and knowledge with countless students and has assisted and inspired them in a variety of career areas. His contributions to the profession of education have been evidenced through memberships in numerous professional organizations and his dedication to the University of Central Oklahoma is evidenced by his service on various departmental, college, and university councils and committees.

WHEREAS, MR. LEE RUCKER's many years of dedicated service deserve special recognition:

NOW, THEREFORE, BE IT RESOLVED, that the *Regional University System of Oklahoma* bestows upon MR. LEE RUCKER the honorary title of "Professor Emeritus of the School of Music" and extends to him an expression of commendation and appreciation for his contribution to the success of the University of Central Oklahoma and wishes for his continued health and happiness and a feeling of joy and satisfaction which rightfully comes to a person who has served so faithfully and honorably as an educator in our state; and

BE IT FURTHER RESOLVED, that this resolution be entered into the official minutes of the *Regional University System of Oklahoma* and a copy, signed by the Chair of the Board, be forwarded to MR. LEE RUCKER.

ADOPTED by the *Regional University System of Oklahoma* this fourth day of November 2011.



Michael W. Mitchel, Chair
Regional University System of Oklahoma

ATTEST:



Richard C. Ogden, Secretary



Office of the President

1100 E. 14th Street, PMB P-8 Ada, OK 74820-6999
(580) 559-5213 ~ (580) 332-1623 FAX

Attachment C
Page 1 of 6

**East Central University
November 4, 2011**

To the Regional University System of Oklahoma

Chair Mike Mitchel and Members of the Board:

I. PERSONNEL

A. RESIGNATIONS

DR. STEVE TURNER, Vice President for Administration and Finance has accepted the Presidency at Northeastern State University. Dr. Turner will be leaving East Central University effective December 31, 2011.

MS. JEAN THOMPSON, Instructor and Interim Program Director of Health Information Management submitted her resignation effective September 12, 2011.

MS. BRIANNA WILLIS, Instructor of Nursing submitted her resignation effective December 31, 2011.

B. SALARY ADJUSTMENTS

DR. KARLA PETERSON was named the Chickasaw Nation Endowed Professor of Business Administration for the 2011-12 academic year at the September 17, 2010 board meeting. Dr. Peterson will be paid an additional \$2,500 for the 2011-12 academic year. The salary adjustment will be paid from earnings on the Endowment held by the East Central University Foundation, Inc. The increase will be continued as long as Dr. Peterson holds the Chickasaw Nation Endowed Professorship in Business Administration.

East Central University

DR. JAMES RAUCH was named the Vision Bank Endowed Professor in Banking and Finance for the 2011-12 academic year at the September 17, 2010 board meeting. Dr. Rauch will be paid an additional \$2,500 for the 2011-12 academic year. The salary adjustment will be paid from earnings on the Endowment held by the East Central University Foundation, Inc. The increase will be continued as long as Dr. Rauch holds the Vision Bank Endowed Professorship in Banking and Finance.

DR. TOM LANIS was named the Gene A. Nelson Endowed Chair in Business Administration for the 2011-12 academic year at the September 17, 2010 board meeting. Dr. Lanis will be paid an additional \$7,500 for the 2011-12 academic year. The salary adjustment will be paid from Oklahoma State Regents Matching Endowment program and from the earnings on the Endowment held in the East Central University Foundation, Inc. The increase will be continued as long as Dr. Lanis holds the Nelson Endowed Chair.

DR. CHARLIE JONES was named the Crabtree Family Endowed Professorship in Business for the 2011-12 academic year at the September 17, 2010 board meeting. Dr. Jones will be paid an additional \$5,000 for the 2011-12 academic year. The salary adjustment will be paid from Oklahoma State Regents Matching Endowment program and from the earnings on the Endowment held in the East Central University Foundation, Inc. The increase will be continued as long as Dr. Jones holds the Crabtree Family Endowed Professorship.

MR. ED HOBBS was named the Horne and Company Endowed Professor in Accounting for the 2011-12 academic year at the September 17, 2010 board meeting. Mr. Hobbs will be paid an additional \$2,500 for the 2011-12 academic year. The salary adjustment will be paid from earnings on the Endowment held by the East Central University Foundation, Inc. The increase will be continued as long as Mr. Hobbs holds the Horne and Company Endowed Professorship in Accounting.

DR. PATRICK FOUNTAIN was named the S. C. Boswell Distinguished Professor for the 2011-12 academic year. Dr. Fountain will be paid an additional \$2,000 for the 2011-12 academic year. The salary adjustment will be paid from funding in the S. C. Boswell Trust held by the East Central University Foundation, Inc., The increase will be continued as long as Dr. Fountain holds the S. C. Boswell Professorship.

East Central University

II. GRANTS AND CONTRACTS

EDUCATIONAL OPPORTUNITY CENTER.....\$435,645

East Central University received a \$435,645 grant from the US Department of Education. The project period: September 1, 2011 through October 31, 2012. This grant will provide financial aid and admissions counseling and information to low income and/or first generation individuals to enter, re-enter or continue a post-secondary education program. The Project Director is Ms. Evelyn Martin.

STRENGTHENING THE CULTURE:

STUDENT SUCCESS.....\$400,000

East Central University received a \$400,000 grant from the US Department of Education. The project period: October 1, 2011 through September 30, 2012. This grant will provide academic and non-academic services to Native American and low-income students to increase retention and graduation rates. The Project Director is Dr. Duane Anderson.

UPWARD BOUND MATH AND SCIENCE.....\$287,827

East Central University received a \$287,827 grant from the US Department of Education. The project period: November 1, 2011 through October 31, 2012. This grant will provide funds to prepare low income and/or first generation high school students from targeted areas to enter college and pursue a bachelor's degree in math and science. The Project Director is Ms. Rhonda Pettit.

McNAIR SCHOLARS PROGRAM.....\$244,188

East Central University received a \$244,188 grant from the Department of Education. The project period: October 1, 2011 through September 30, 2012. This grant will help prepare undergraduate math and science majors for doctoral study. The Project Director is Ms. Pat Sutton.

East Central University

sECUre SUCCESS.....\$213,180

East Central University received a \$213,180 grant from the US Department of Education. The project period: September 1, 2011 through August 31, 2012. This grant will provide funds to mentor, tutor, heighten cultural exposure, learning communities and to counsel. The Project Director is Ms. Kathy Gardenhire.

INITIATIVE FOR MINORITY STUDENTS

BRIDGES TO THE BACCALAUREATE\$206,314

East Central University received a \$206,314 grant from the National Institute of Health (NIH). The project period: September 1, 2011 through August 31, 2012. This grant will provide funds to increase transfer rates of biomedical minority students from 3 community colleges via activities including summer research at ECU and other research institutions, curriculum adjustments for every transfer, and workshops on lab skills. The Project Director is Dr. Terry Cluck.

SMALL BUSINESS DEVELOPMENT CENTER.....\$79,911

East Central University received a \$79,911 grant from the Oklahoma Small Business Development Center. The project period: January 1, 2011 through December 31, 2011. This grant will provide business counseling, training, appropriate technical support, and serve as an economic information resource for small businesses in the service area. The Project Director is Ms. Ann Ritter.

SOUTHERN OKLAHOMA MEMORIAL FOUNDATION.....\$25,700

East Central University received a \$25,700 grant from the Southern Oklahoma Memorial Foundation. The project period: August 15, 2011 through August 14, 2013. This grant will provide funds to purchase equipment and supplies for AHEC-Nursing and provide salary support for a classroom facilitator. The Project Director is Ms. Peggy Miller.

JOINT OPPORTUNITIES FOR BUILDING

SUCCESS (JOBS).....\$25,000

East Central University received a \$25,000 grant from the Federal Home Loan Bank of Topeka through Vision Bank. The project period: November 1, 2011 through October 31, 2012. This grant will provide funds to assist in the construction of the School of Business and Convention Center. The Project Director is Dr. Steve Turner.

East Central University

OK AMP PROGRAM\$24,569

East Central University received a \$24,569 grant from the National Science Foundation. The project period: September 1, 2011 through August 31, 2012. This grant will provide research opportunities for minorities in Science, Technology, Engineering and Math. The Project Director is Dr. Carl Rutledge.

OKLAHOMA NASA SPACE GRANT CONSORTIUM\$23,405

East Central University received a \$23,405 subcontract from NASA through the University of Oklahoma. The project period: November 1, 2011 through October 31, 2012. This grant will provide research opportunities, academic coursework, internships, industry visits, conferences or visits to NASA Centers for NASA's and the Nation's future science, engineering and technology workforce requirements. The Project Director is Dr. Mark Micozzi.

**16TH ANNUAL OK LITERARY ARTS FESTIVAL:
MARK TWAIN'S CONTROVERSY THROUGH
THE YEARS.....\$500**

East Central University received a \$500 grant from the Oklahoma Humanities Council through the National Endowment for the Humanities. The project period: September 1, 2011 through November 30, 2011. This grant will help bring a Mark Twain scholar to East Central University. The scholar will present at the Festival and display Mark Twain artifacts. The Project Director is Dr. Teresa Rothrock.

Total Grants and Contracts--\$1,966,239

East Central University

III. PURCHASES

The following purchases are being made in accordance with Board policy (over \$25,000 and under \$100,000)

Annual contract with Crawford and Associates for accounting services in the amount of \$40,000 (E&G)

PC Mall Gov, Inc. for annual Microsoft campus license agreement in the amount of \$28,339.53. (E&G)

Great Plains for the purchase of Genie Boom Forklift in the amount of \$49,000 (E&G)

Mike Mapp for emergency repair of wheelchair ramp and sidewalk in the amount of \$31,850. (E&G)

Personal services contract for Marcia Carter (Interim Financial Aid Director) in the amount of \$49,500. (Aux)

IV. INFORMATIONAL ITEM

East Central University is in the process of forming a selection committee to conduct a search for a new Vice President for Administration and Finance. Depending on the timing of the search, ECU may name an Interim Vice President for Administration and Finance. The board will be notified if an interim is named.

Respectfully submitted,

John R. Hargrave
President



OFFICE OF THE PRESIDENT

SOUTHEASTERN OKLAHOMA STATE UNIVERSITY
1405 N. FOURTH AVE., PMB 4236
DURANT, OK 74701-0609

580-745-2500
FAX 580-745-2515
www.SE.edu

Regent Michael W. Mitchel
Regional University System of Oklahoma
Landmark Towers
3555 Northwest 58th, Suite 320
Oklahoma City, OK 73112

Dear Regent Mitchel:

The recommendations of Southeastern Oklahoma State University are as follows:

I. PERSONNEL

A. FACULTY APPOINTMENTS

School of Arts and Sciences

We recommend approval to employ **Mr. Corey King** for the position of temporary full-time Facility Manager/Technical Director/Instructor of Theatre effective August 29, 2011, at a 12 month salary of \$42,000.

Mr. King earned his Master of Business Management from Florida Institute of Technology, Melbourne, Florida and his Bachelor of Arts in Musical Theatre from Southeastern Oklahoma State University, Durant, Oklahoma.

B. DEATH OF A DEAN

John Massey School of Business

We regret to inform you of the death of **Dr. Walter (Buddy) Gaster**, Dean of the John Massey School of Business, on September 4, 2011. Dr. Gaster had served as dean since 2002 and was a member of the Southeastern family since 2000. He had made a number of significant contributions in the areas of accreditation and fundraising during his tenure. Previously, Dr. Gaster had served as a faculty member and department chair in the School of Business at East Central University.

II. NOTICE OF GRANT AWARDS

The following grants have been awarded to Southeastern Oklahoma State University:

Texoma Upward Bound.....\$242,250.00

This grant was awarded to Southeastern Oklahoma State University from the U.S. Department of Education in the amount of \$242,250. The effective date of the grant is September 1, 2011. This grant's Project Director is Mr. Larry Dresser, Director of Upward Bound Programs. The purpose of this grant is to generate skills and motivation necessary for success in education beyond high school for students from first generation, low-income families who have need for academic support. Approximately 50+ freshmen, sophomores, juniors, and seniors will attend a summer session of 2 to 8 weeks. During the academic year, Texoma Upward Bound will offer these students tutoring, mentoring, and trips for cultural and educational enrichment. The summer staff will include the regular staff: Director, Assistant Director, Academic Coordinator, two Academic Advisors, Office Assistant, plus 19 Teachers, two Dorm Supervisors, and three Tutor/Mentors.

Upward Bound Math-Science.....\$285,031.00

This grant was awarded to Southeastern Oklahoma State University from the U.S. Department of Education in the amount of \$285,031. The effective date of the grant is November 1, 2011. This grant's Project Director is Mr. Larry Dresser, Director of Upward Bound Programs. The purpose of this grant is to provide comprehensive services, designed to increase high school graduation rates, increase competency in challenging subject matters, encourage eligible students to pursue math and science studies and careers, and help gain parental participation in the growth of their children to fifty-nine participants per year who meet Federal guidelines. These participants will be selected from eight surrounding counties in southeastern Oklahoma and Grayson County, Texas. During the academic year, participants will be offered tutoring and trips for cultural and educational enrichment. Summer faculty/instructors will be assigned to provide hands-on scientific experience, mentoring, field experiences, research, and laboratory experiments, career exploration, recreation/physical education, and additional liberal arts curriculum. The summer staff will include the regular staff: Director, Assistant Director, Academic Coordinator, Academic Advisor, Office Assistant, Dorm Supervisor, three Tutor/Mentors and 13 Teachers.

Student Support Services Program TEACHER PREP.....\$213,180.00

This grant was awarded to Southeastern Oklahoma State University from the U.S. Department of Education in the amount of \$213,180. The effective date of the grant is September 1, 2011. This grant's Project Director is Dr. Rozanna San Miguel May, Project Director of TEACH Program. The purpose of this grant is to provide a variety of services to low-income, first generation college students and to students with disabilities. These services include tutoring, personal counseling, cultural experiences, career guidance, enrollment assistance, specially designed workshops, and special services for students with disabilities. In addition, to these services, the program strives to develop a supportive institutional climate, which combined with the services provided, will lead to increased retention and graduation rates of the program participants. This year, approximately 20 students per semester will receive Student Support Services' Grant Aid funds to help reduce dependency upon loans. The Grant Aid supplement totaled \$10,000 for the 2011-2012 academic year. This project is funded to serve 140 eligible students.

Native American Excellence in Education.....\$366,631.00

This grant was awarded to Southeastern Oklahoma State University from the U.S. Department of Education in the amount of \$366,631. The effective date of the grant is July 1, 2011. The Project Director is Mr. Chris Wesberry, Academic Advisor/Project Director of Academic Advising & Outreach Center (Native American Excellence in Education). The purpose of this grant is to provide support and training to 12 Native American students in completion of a pre-service education program, which will enable these individuals to meet the requirements for full state certification or licensure as a teacher. Participants will receive full tuition, fees, books, monthly stipend, and professional and cultural workshops.

National Board Certification.....\$25,000.00

This grant was awarded to Southeastern Oklahoma State University from the Oklahoma Commission for Teacher Preparation (OCTP) in the amount of \$25,000. The effective date of the grant is July 1, 2011. This grant's Project Director is Dr. Susan Morrison, Assistant Professor of Educational Instruction and Leadership. The purpose of this grant is to provide training to teacher candidates who seek National Board Certification. The goal of the State of Oklahoma is to train enough candidates so that each school has at least one National Certified Teacher. Training and support for candidates is extensive. Through the year, OCTP staff conducts distance learning workshops and special training throughout the state. University Support Providers are present on several university campuses to assist candidates with their questions about certification. Regional Coordinators are also resource persons and provide information about the certification process to new candidates. A main focus of the grant involves the summer workshops hosted by Southeastern Oklahoma State University. The workshop provides detailed instruction for candidates who are beginning the certification process. Intense plenary and breakout workshops provide hands-on opportunities for candidates to begin the planning for the construction of their certification materials. Instructors are highly trained presenters who are themselves National Board Certified Teachers. Southeastern Oklahoma State University is proud to host this training grant and the summer workshop. Southeastern Oklahoma State University has been a partner with over 2,000 National Board Certified Teachers in Oklahoma over the length of this partnership. Last year, approximately 500 candidates attended the workshops and many represent certified teachers of the future.

Student Support Services.....\$345,130.00

This grant was awarded to Southeastern Oklahoma State University from the U.S. Department of Education in the amount of \$345,130. The effective date of the grant is September 1, 2011. This grant's Project Director is Ms. Susan D. Dodson, Director of Student Support Services. The purpose of this grant is to provide a variety of services to low-income, first generation college students and students with disabilities. These services include tutoring, personal and academic counseling, cultural experiences, career guidance, enrollment assistance, specially designed workshops, and special services for students with disabilities. In addition to these services, the program strives to develop a supportive institutional climate, which combined with the services provided, will lead to increased retention and graduation rates of the program participants. This year, approximately 60 students per semester will receive Student Support Services' Grant Aid funds to help reduce dependency upon loans. The Grant Aid supplement totaled \$35,635 for the 2011-2012 academic year. This project is funded to serve 300 eligible students.

Educational Opportunity Centers Program.....\$486,136.00

This grant was awarded to Southeastern Oklahoma State University from the U.S. Department of Education in the amount of \$486,136. The effective date of the grant is September 1, 2011. This grant's Project Director is Ms. Teriki Hicks, Director of the Educational Opportunity Center. The purpose of this grant is to provide assistance and information to adults who seek to enter or continue a program of post-secondary education. Services include counseling on educational opportunities, college admissions, testing, career options, student financial aid assistance, tutoring, and coordination with other agencies and post-secondary institutions. The Southeastern Oklahoma State University's Educational Opportunity Center serves 1,669 adults in ten counties in southern Oklahoma (Love, Carter, Marshall, Bryan, Atoka, Coal, Pittsburg, Pushmataha, Choctaw, and McCurtain) and in Grayson County, Texas with seven full-time staff members, part-time technical assistants, and tutors. The proposal is in its first year of a five-year grant. Southeastern Oklahoma State University Educational Opportunity Center was first funded in 1991.

Watermelon Uses in Prevention of Skin Damage\$15,000.00

This grant was awarded to Southeastern Oklahoma State University from the U.S. Department of Agriculture via North Carolina State University in the amount of \$15,000. The effective date of the grant is June 8, 2011. This grant's co-principal investigator is Dr. Teresa Golden, Assistant Professor of Biological Sciences. The purpose of this grant is to test formulations on tissue culture cells to see if they block or lead to repair of damage initiated by UV-light exposure. All tissue culture work will be done at Southeastern and any human or clinical studies will be performed by Dr. Penelope Perkins-Veazie and/or other collaborators. This grant is in collaboration with Dr. Penelope Perkins-Veazie, Plants for Human Health Institute, North Carolina State University (Kannapolis, NC) and Dr. Angela Davis, Agricultural Research Service, United States Department of Agriculture (Lane, OK). The grant does include funds for payment of student workers to assist in the research done at Southeastern.

Connect2Complete Program.....\$399,014.00

This grant was awarded to Southeastern Oklahoma State University from the U.S. Department of Education in the amount of \$399,014. The effective date of the grant is October 1, 2011. This grant's Project Director is Mr. Chris Wesberry, Academic Advisor/Project Director of Academic Advising & Outreach Center (Native American Excellence in Education) and Project Co-Director is Mr. Tim Boatman, Associate Dean of Academic Services. The purpose of this grant is to improve the retention and graduation rates of Native American students; to provide faculty development; to renovate office space and library space; to provide assistance with advanced degrees; to purchase resources for the library; to provide conference training to faculty, staff, and students; to hire two Academic Advisors/Retention Specialists. The project is awarded to the University based on its significant percent of Native American students attending Southeastern Oklahoma State University. With the assistance of the Native American-Serving Nontribal Institutions Grant, Southeastern will be able to reach more Native American people and enhance our capacity to serve students.

Sincerely,

A handwritten signature in cursive script that reads "Larry Minks".

Dr. Larry Minks
President

SOUTHWESTERN OKLAHOMA STATE UNIVERSITY

Weatherford, Oklahoma

October 19, 2011

Regional University System of Oklahoma
Landmark Towers
3555 NW 58th Street, Suite 320
Oklahoma City, OK 73112

Dear Board Members:

The agenda items of Southwestern Oklahoma State University are as follows:

I. PERSONNEL

A. REASSIGNMENT

Ms. Sherron Manning, Director of Counseling, Assessment and Orientation on the Sayre campus, has been appointed as Interim Dean on this campus effective September 26, 2011. Ms. Manning has been serving in the director's position since 2004.

B. RETIREMENT WITH RESOLUTION

Dr. Jimmie Ray James, Dean of the College of Associate and Applied Programs on the Sayre campus, will retire effective December 31, 2011. Dr. James was first employed at SWOSU on July 1, 2002.

C. NON-SALARIED FACULTY APPOINTMENTS

Dr. Candace Gulisao has been appointed to serve in a non-salaried, volunteer faculty position as an Assistant Professor in the Department of Pharmacy Practice effective January 1, 2012. She is currently serving as a Clinical Pharmacy Specialist at Saint Francis

currently serving as a Clinical Pharmacy Specialist at Saint Francis Hospital in Tulsa, Oklahoma. She will assist with the clinical education portion of the pharmacy program at this practicum site.

Dr. Cheri Lemons has been appointed to serve in a non-salaried, volunteer faculty position as an Assistant Professor in the Department of Pharmacy Practice effective January 1, 2012. She is currently serving as a Trauma Emergency Center Specialist at Saint Francis Hospital in Tulsa, Oklahoma. She will assist with the clinical education portion of the pharmacy program at this practicum site.

II. GRANTS AND CONTRACTS

A. UPWARD BOUND YEAR 5 \$366,856

The **U.S. DEPARTMENT OF EDUCATION** has awarded a grant entitled "*Upward Bound Year 5*," in the amount of \$366,856. The grant, in part, supports an outreach program, as well as, a residential summer program, that is designed to encourage first generation, economically disadvantaged high school students to meet the academic and social challenges of higher education. The primary function of this award is K-12 student training. The principal investigator of the grant is **Ms. Jamie Novey**.

B. CHEYENNE AND ARAPAHO TRIBAL COLLEGE \$200,000

The **CHEYENNE AND ARAPAHO TRIBAL BOARD** has awarded a cooperative agreement entitled "*Cheyenne and Arapaho Tribal College (CATC)*," in the amount of \$200,000. The cooperative agreement to SWOSU, in part, supports the administrative and accounting processes for the two-year tribal college on the campus of Southwestern Oklahoma State University (SWOSU). CATC will provide quality educational experiences to Native American students. The primary function of this award is public service. The principal investigator of the cooperative agreement is **Dr. Henrietta Mann**.

C. CHILD NUTRITION PROGRAM \$186,000

The **U.S. DEPARTMENT OF AGRICULTURE** through the Oklahoma State Department of Education has awarded a grant entitled "*Child*

Nutrition Program,” in the amount of \$186,000. The grant, in part, supports the nutrition costs for participants of the residential program for youth housed as part of the SWOSU Adventure Programs. The primary function of this award is public service. The principal investigator of the grant is **Ms. Brenda Lumpkin**.

D. RUI: MODULATION OF SYNAPTIC VESICLE EXOCYTOSIS IN C ELEGANS FY11\$149,587

The NATIONAL SCIENCE FOUNDATION has awarded a grant entitled “*RUI: Modulation of Synaptic Vesicle Exocytosis in C elegans FY11,*” in the amount of \$149,587. The grant, in part, supports biomedical research involving undergraduate students at SWOSU. This project will expose students to novel research ideas and speculate the molecular bases of neurobiology. A newly designed laboratory course will enable students to become skilled at experimental design and research execution, reinforcing data analysis and quantitative abilities, evaluating hypothesis and communicating findings. Students will translate their knowledge in neuroscience to local communities participating in “brain awareness” week and neuroscience presentations at local schools. The primary function of this award is basic research. The principal investigator of the grant is **Dr. Andrea Holgado**.

E. INCREASING AWARENESS OF ORGAN AND TISSUE DONATION THROUGH EDUCATION.....\$31,033

The OKLAHOMA STATE DEPARTMENT OF HEALTH has awarded a grant entitled “*Increasing Awareness of Organ and Tissue Donation through Education,*” in the amount of \$31,033. This grant, in part, supports the continuation and expansion of an educational opportunity which gives students an opportunity to develop and implement an educational program on organ and tissue donation. The primary function of this award is University student training and support. The principal investigator of the grant is **Ms. Tamra Weimer**.

F. LOUIS STOKES ALLIANCE FOR MINORITY PARTICIPATION IN SCIENCE, MATHEMATICS, ENGINEERING AND TECHNOLOGY PHASE IV, YEAR 2.....\$15,600

The NATIONAL SCIENCE FOUNDATION through Oklahoma State University has awarded a cooperative agreement entitled “*Louis Stokes*

Alliance for Minority Participation in Science, Mathematics, Engineering, and Technology Phase IV Year 2," in the amount of \$15,600. The cooperative agreement, in part, supports efforts to recruit minority students to pursue degrees in the science, mathematics, engineering, and technology fields. The primary function of this award is University student training and support. The principal investigator of the cooperative agreement is ***Dr. Timothy Hubin***.

III. STIPEND

We request permission to award employee stipends of 2 percent of contract salary with a minimum of \$750 and a maximum of \$1,200 for all full-time employees in Educational and General I and Auxiliary budget units. Employees funded by grants and contracts and other part-time employees may receive full or partial stipends depending on the availability of funds and their date of hire.

Respectfully submitted,

Randy L. Beutler
President

csi

RESOLUTION
Regional University System of Oklahoma

WHEREAS, DR. JIMMIE RAY JAMES will retire from Southwestern Oklahoma State University at Sayre on December 31, 2011; and

WHEREAS, DR. JIMMIE RAY JAMES has had a prestigious career for over nine years in higher education in Oklahoma while at Southwestern Oklahoma State University at Sayre; and

WHEREAS, DR. JIMMIE RAY JAMES served with distinction as the Dean of the College of Associate and Applied Programs at Southwestern Oklahoma State University at Sayre; and

WHEREAS, DR. JIMMIE RAY JAMES provided invaluable service to Southwestern Oklahoma State University at Sayre as the Dean of the College of Associate and Applied Programs of this campus; and

WHEREAS, DR. JIMMIE RAY JAMES demonstrated dedication to his profession by exhibiting excellence in teaching, administrative leadership and planning at Southwestern Oklahoma State University at Sayre; and

WHEREAS, DR. JIMMIE RAY JAMES is deserving of special recognition for his loyal and faithful service to the university;

NOW, THEREFORE, BE IT RESOLVED, that the *Regional University System of Oklahoma* bestows upon DR. JIMMIE RAY JAMES the honorary title of "Dean Emeritus" and extends to him an expression of commendation and appreciation for his many contributions to the success of Southwestern Oklahoma State University at Sayre and wishes for him continued health and happiness and a feeling of joy and satisfaction which rightfully comes to a person who has served so faithfully and honorably in the education profession of Oklahoma; and

BE IT FURTHER RESOLVED, that this resolution be entered into the official minutes of the *Regional University System of Oklahoma* and a copy, signed by the Chair of the Board, be forwarded to DR. JIMMIE RAY JAMES at Sayre, Oklahoma.

ADOPTED by the *Regional University System of Oklahoma* this fourth day of November 2011.



Michael W. Mitchel, Chair
Regional University System of Oklahoma

ATTEST:



Richard C. Ogden, Secretary